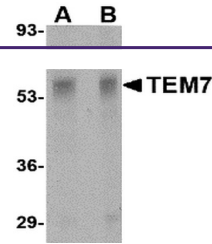
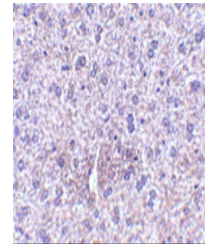

Product Datasheet

PLXDC1 Antibody (orb1238818)

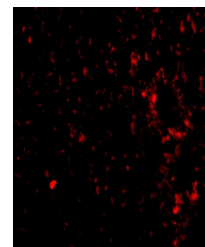
Description	PLXDC1 Antibody
Species/Host	Rabbit
Reactivity	Human, Mouse, Rat
Conjugation	Unconjugated
Tested Applications	ELISA, IF, IHC-P, WB
Immunogen	TEM7 antibody was raised against a 16 amino acid synthetic peptide from near the center of human TEM7. The immunogen is located within amino acids 250 - 300 of TEM7.
Target	PLXDC1
Preservatives	TEM7 Antibody is supplied in PBS containing 0.02% sodium azide.
Form/Appearance	Liquid
Concentration	1 mg/mL
Storage	TEM7 antibody can be stored at 4°C for three months and -20°C, stable for up to one year. As with all antibodies care should be taken to avoid repeated freeze thaw cycles. Antibodies should not be exposed to prolonged high temperatures.
Note	For research use only
Application notes	TEM7 antibody can be used for detection of TEM7 by Western blot at 0.5 - 1 µg/mL. Antibody can also be used for immunohistochemistry starting at 2.5 µg/mL. For immunofluorescence start at 20 µg/mL. Antibody validated: Western Blot in rat samples; Immunohistochemistry in mouse samples and Immunofluorescence in mouse samples. All other applications and species not yet tested.
Isotype	IgG
Clonality	Polyclonal
Uniprot ID	Q8IUUK5
NCBI	AAG00869
Dilution Range	TEM7 antibody can be used for detection of TEM7 by Western blot at 0.5 - 1 µg/mL. Antibody can also be used for immunohistochemistry starting at 2.5 µg/mL. For immunofluorescence start at 20 µg/mL. Antibody validated: Western Blot in rat samples; Immunohistochemistry in mouse samples



Western blot analysis of TEM7 in rat liv...



Immunohistochemistry of TEM7 in mouse li...



Immunofluorescence of TEM7 in Mouse Live...