
Product Datasheet

MACC1 Antibody (orb1238813)

Description

MACC1 Antibody

Species/Host

Rabbit

Reactivity

Human, Mouse, Rat

Conjugation

Unconjugated

Tested Applications

ELISA, IF, IHC-P, WB

Immunogen

MACC1 antibody was raised against a 17 amino acid synthetic peptide near the center of human MACC1. The immunogen is located within amino acids 430 - 480 of MACC1.

Target

MACC1

Preservatives

MACC1 Antibody is supplied in PBS containing 0.02% sodium azide.

Form/Appearance

Liquid

Concentration

1 mg/mL

Storage

MACC1 antibody can be stored at 4°C for three months and -20°C, stable for up to one year. As with all antibodies care should be taken to avoid repeated freeze thaw cycles. Antibodies should not be exposed to prolonged high temperatures.

Note

For research use only

Application notes

MACC1 antibody can be used for detection of MACC1 by Western blot at 1 - 2 µg/mL. Antibody can also be used for immunohistochemistry starting at 2.5 µg/mL. For immunofluorescence start at 20 µg/mL. Antibody validated: Western Blot in human and mouse samples; Immunohistochemistry in human samples and Immunofluorescence in human samples. All other applications and species not yet tested.

Isotype

IgG

Clonality

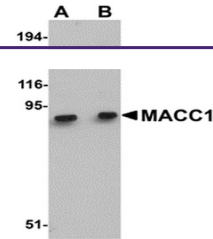
Polyclonal

MW

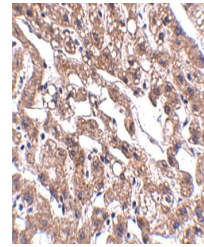
Predicted: 94 kDa Observed: 90 kDa

Uniprot ID
[Q6ZN28](#)
NCBI
[NP_877439](#)
Dilution Range

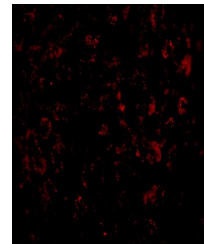
MACC1 antibody can be used for detection of MACC1 by Western blot at 1 - 2 µg/mL. Antibody can also be used for immunohistochemistry starting at 2.5 µg/mL. For immunofluorescence start at 20



Western blot analysis of MACC1 in mouse ...



Immunohistochemistry of MACC1 in human l...



Immunofluorescence of MACC1 in Human Liv...