
Product Datasheet

ACOT13 Antibody (orb1238803)

Description

ACOT13 Antibody

Species/Host

Rabbit

Reactivity

Human, Mouse, Rat

Conjugation

Unconjugated

Tested Applications

ELISA, IF, IHC-P, WB

Immunogen

THEM2 antibody was raised against a 17 amino acid synthetic peptide near the carboxy terminus of human THEM2. The immunogen is located within the last 50 amino acids of THEM2.

Target

ACOT13

Preservatives

THEM2 Antibody is supplied in PBS containing 0.02% sodium azide.

Form/Appearance

Liquid

Concentration

1 mg/mL

Storage

THEM2 antibody can be stored at 4°C for three months and -20°C, stable for up to one year. As with all antibodies care should be taken to avoid repeated freeze thaw cycles. Antibodies should not be exposed to prolonged high temperatures.

Note

For research use only

Application notes

THEM2 antibody can be used for detection of THEM2 by Western blot at 1 µg/mL. Antibody can also be used for immunohistochemistry starting at 2.5 µg/mL. For immunofluorescence start at 20 µg/mL. Antibody validated: Western Blot in human samples; Immunohistochemistry in human samples and Immunofluorescence in human samples. All other applications and species not yet tested.

Isotype

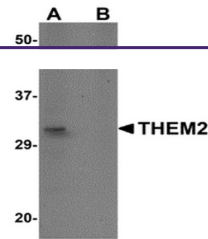
IgG

Clonality

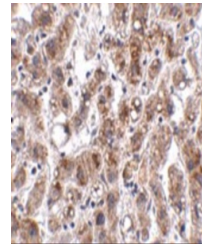
Polyclonal

Uniprot ID
Q9NPJ3
NCBI
NP_060943
Dilution Range

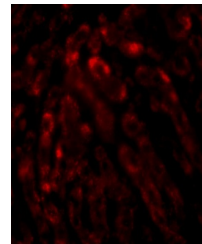
THEM2 antibody can be used for detection of THEM2 by Western blot at 1 µg/mL. Antibody can also be used for immunohistochemistry starting at 2.5 µg/mL. For immunofluorescence start at 20 µg/mL. Antibody validated: Western Blot in human samples; Immunohistochemistry in human samples



Western blot analysis of THEM2 in HepG2 ...



Immunohistochemistry of THEM2 in human l...



Immunofluorescence of THEM2 in human liv...