
Product Datasheet

ORAI1 Antibody (orb1238792)

Description

ORAI1 Antibody

Species/Host

Mouse

Reactivity

Human, Mouse, Rat

Conjugation

Unconjugated

Tested

ELISA, IF, IHC-P, WB

Applications
Immunogen

Mouse monoclonal ORAI1 antibody was raised against a 16 amino acid synthetic peptide from near the carboxy terminus of human ORAI1.

Target

ORAI1

Preservatives

ORAI1 Monoclonal Antibody is supplied in PBS containing 0.02% sodium azide.

Form/Appearance

Liquid

Concentration

1 mg/mL

Storage

ORAI1 monoclonal antibody can be stored at -20°C, stable for one year.

Note

For research use only

Application notes

ORAI1 antibody can be used for detection of ORAI1 by Western blot at 1 - 2 µg/mL. Antibody can also be used for immunohistochemistry starting at 2.5 µg/mL. For immunofluorescence start at 20 µg/mL. Antibody validated: Western Blot in human samples; Immunohistochemistry in human samples and Immunofluorescence in human samples. All other applications and species not yet tested.

Isotype

IgG2b

Clonality

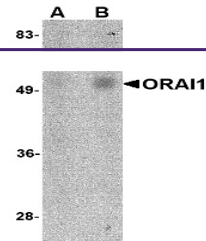
Monoclonal

MW

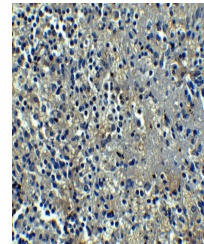
Predicted: 33 kDa Observed: 50 kDa

Uniprot ID
[Q96D31](#)
NCBI
[Q96D31](#)
Dilution Range

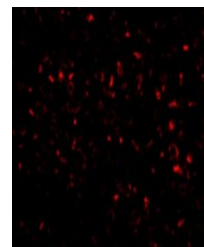
ORAI1 antibody can be used for detection of ORAI1 by Western blot at 1 - 2 µg/mL. Antibody can also be used for immunohistochemistry starting at 2.5 µg/mL. For immunofluorescence start at 20 µg/mL. Antibody validated: Western Blot in human samples; Immunohistochemistry in human samples and Immunofluorescence in human samples. All other applications and species not yet tested.



Western blot analysis of ORAI1 in human ...



Immunohistochemistry of ORAI1 in human s...



Immunofluorescence of ORAI1 in Human Spl...