
Product Datasheet

ORAI1 Antibody (orb1238791)

Description

ORAI1 Antibody

Species/Host

Rabbit

Reactivity

Human, Mouse

Conjugation

Unconjugated

Tested Applications

ELISA, IF, IHC-P, WB

Immunogen

ORAI1 antibody was raised against an 18 amino acid synthetic peptide from near the amino terminus of human ORAI1. The immunogen is located within the first 50 amino acids of ORAI1.

Target

ORAI1

Preservatives

ORAI1 Antibody is supplied in PBS containing 0.02% sodium azide.

Form/Appearance

Liquid

Concentration

1 mg/mL

Storage

ORAI1 antibody can be stored at 4°C for three months and -20°C, stable for up to one year. As with all antibodies care should be taken to avoid repeated freeze thaw cycles. Antibodies should not be exposed to prolonged high temperatures.

Note

For research use only

Application notes

ORAI1 antibody can be used for detection of ORAI1 by Western blot at 1 µg/mL. Antibody can also be used for immunohistochemistry starting at 10 µg/mL. For immunofluorescence start at 20 µg/mL. Antibody validated: Western Blot in human samples; Immunohistochemistry in human samples and Immunofluorescence in human samples. All other applications and species not yet tested.

Isotype

IgG

Clonality

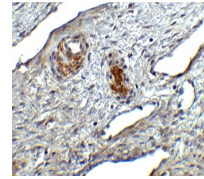
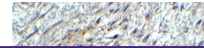
Polyclonal

MW

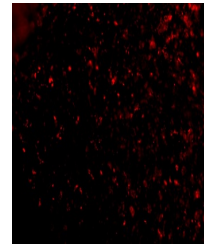
Predicted: 33 kDa Observed: 50 kDa

Uniprot ID
[Q96D31](#)
NCBI
[Q96D31](#)
Dilution Range

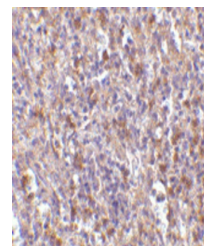
ORAI1 antibody can be used for detection of ORAI1 by Western blot at 1 µg/mL. Antibody can also be used for immunohistochemistry starting at 10 µg/mL. For immunofluorescence start at 20 µg/mL. Antibody validated: Western Blot in human samples;



Immunohistochemistry of ORAI1 in human o...



Immunofluorescence of ORAI1 in Human Spl...



Immunohistochemistry of ORAI1 in human s...