

---

## Product Datasheet

### ORAI3 Antibody (orb1238790)

**Description**

ORAI3 Antibody

**Species/Host**

Mouse

**Reactivity**

Human, Rat

**Conjugation**

Unconjugated

**Tested Applications**

ELISA, IF, IHC-P, WB

**Immunogen**

A 19 amino acid synthetic peptide from near the carboxy terminus of human ORAI3.

**Target**

ORAI3

**Preservatives**

ORAI3 Monoclonal Antibody is supplied in PBS containing 0.02% sodium azide.

**Form/Appearance**

Liquid

**Concentration**

1 mg/mL

**Storage**

ORAI3 monoclonal antibody can be stored at -20°C, stable for one year.

**Note**

For research use only

**Application notes**

ORAI3 antibody can be used for detection of ORAI3 by Western blot at 1 µg/mL. Antibody can also be used for immunohistochemistry starting at 2.5 µg/mL. For immunofluorescence start at 5 µg/mL. Antibody validated: Western Blot in rat samples; Immunohistochemistry in rat samples and Immunofluorescence in human and rat samples. All other applications and species not yet tested.

**Isotype**

IgG2a

**Clonality**

Monoclonal

**MW**

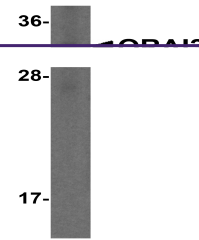
Predicted: 32 kDa Observed: 32 kDa

**Uniprot ID**
[Q9BRQ5](https://www.uniprot.org/uniprot/Q9BRQ5)
**NCBI**
[Q9BRQ5](https://www.ncbi.nlm.nih.gov/nuccore/Q9BRQ5)
**Dilution Range**

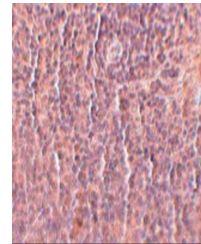
ORAI3 antibody can be used for detection of ORAI3 by Western blot at 1 µg/mL. Antibody can also be used for immunohistochemistry starting at 2.5 µg/mL. For immunofluorescence start at 5 µg/mL. Antibody validated: Western Blot in rat samples; Immunohistochemistry in rat samples and Immunofluorescence in human and rat samples. All other applications and species not yet tested.

**Expiration Date**

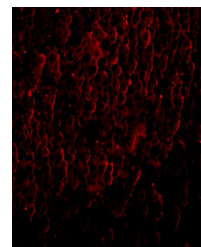
12 months from date of receipt.



Western blot analysis of ORAI3 in rat spleen tissue.



Immunohistochemistry of ORAI3 in rat spleen tissue.



Immunofluorescence of ORAI3 in rat spleen tissue.