
Product Datasheet

OVGP1 Antibody (orb1238789)

Description

OVG1 Antibody

Species/Host

Rabbit

Reactivity

Human, Mouse, Rat

Conjugation

Unconjugated

Tested Applications

ELISA, ICC, IF, WB

Immunogen

OVG1 antibody was raised against an 18 amino acid synthetic peptide from near the amino terminus of human OVG1. The immunogen is located within amino acids 60 - 110 of OVG1.

Target

OVG1

Preservatives

OVG1 Antibody is supplied in PBS containing 0.02% sodium azide.

Form/Appearance

Liquid

Concentration

1 mg/mL

Storage

OVG1 antibody can be stored at 4°C for three months and -20°C, stable for up to one year. As with all antibodies care should be taken to avoid repeated freeze thaw cycles. Antibodies should not be exposed to prolonged high temperatures.

Note

For research use only

Application notes

OVG1 antibody can be used for the detection of OVG1 by Western blot at 1 µg/mL. Antibody can also be used for immunocytochemistry starting at 2.5 µg/mL. For immunofluorescence start at 2.5 µg/mL. Antibody validated: Western Blot in human samples; Immunocytochemistry in human samples and Immunofluorescence in human samples. All other applications and species not yet tested.

Isotype

IgG

Clonality

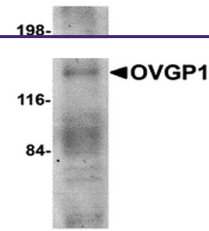
Polyclonal

MW

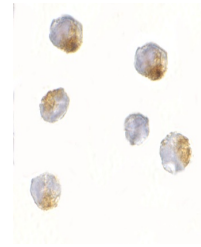
Predicted: 75 kDa Observed: Due to extensive post-translational modification, OVG1 migrates at ~140 kDa in SDS-PAGE.

Uniprot ID
[Q12889](#)
NCBI
[NP_002548](#)
Dilution Range

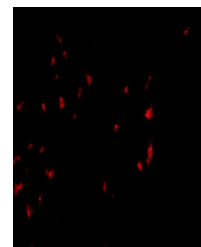
OVG1 antibody can be used for the detection of OVG1 by Western blot at 1 µg/mL. Antibody can also be used for immunocytochemistry starting at



Western blot analysis of OVG1 in human ...



Immunocytochemistry of OVG1 in 293 cell...



Immunofluorescence of OVG1 in 293 cells...