

---

## Product Datasheet

### PDCD1LG2 Antibody (orb1238786)

**Description**

PDCD1LG2 Antibody

**Species/Host**

Mouse

**Reactivity**

Human

**Conjugation**

Unconjugated

**Tested**

ELISA, FC, ICC, IF, IHC-P, WB

**Applications**
**Immunogen**

PD-L2 antibody was raised against the extracellular domain of human PD-L2.

**Target**

PDCD1LG2

**Preservatives**

PD-L2 Antibody is supplied in PBS containing 0.02% sodium azide and 50% glycerol.

**Form/Appearance**

Liquid

**Concentration**

1 mg/mL

**Storage**

PD-L2 antibody can be stored at 4°C for three months and -20°C, stable for up to one year. As with all antibodies care should be taken to avoid repeated freeze thaw cycles. Antibodies should not be exposed to prolonged high temperatures.

**Note**

For research use only

**Application notes**

PD-L2 antibody can be used for detection of PD-L2 by Western blot at 0.5 - 1 µg/mL. Antibody can also be used for immunohistochemistry starting at 2 µg/mL. For immunofluorescence start at 20 µg/mL. Antibody validated: Western Blot in human samples; Immunohistochemistry in human samples; Immunocytochemistry in human samples; Immunofluorescence in human samples and Flow Cytometry in mouse samples. All other applications and species not yet tested.

**Isotype**

IgG2b

**Clonality**

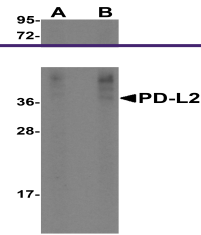
Monoclonal

**MW**

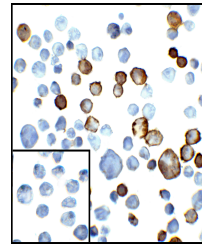
Predicted: 30 kDa Observed: 38 kDa

**Uniprot ID**
[P9BQ51](#)
**NCBI**
[NP\\_079515](#)
**Dilution Range**

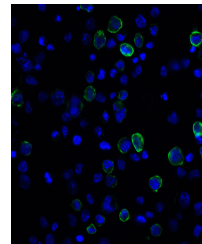
PD-L2 antibody can be used for detection of PD-L2 by Western blot at 0.5 - 1 µg/mL. Antibody can also be used for immunohistochemistry starting at 2 µg/mL. For immunofluorescence start at 20 µg/mL. Antibody validated: Western Blot in human



Western blot analysis of PD-L2 in overex...



Immunocytochemistry of PD-L2 in transfec...



Immunofluorescence of PD-L2 in transfec...