

---

## Product Datasheet

### MTA2 Antibody (orb1238782)

**Description**

MTA2 Antibody

**Species/Host**

Rabbit

**Reactivity**

Human, Mouse, Rat

**Conjugation**

Unconjugated

**Tested**

ELISA, ICC, IF, IHC-P, WB

**Applications**
**Immunogen**

PID antibody was raised against a 17 amino acid peptide near the carboxy terminus of human PID. The immunogen is located within the last 50 amino acids of PID.

**Target**

MTA2

**Preservatives**

PID Antibody is supplied in PBS containing 0.02% sodium azide.

**Form/Appearance**

Liquid

**Concentration**

1 mg/mL

**Storage**

PID antibody can be stored at 4°C for three months and -20°C, stable for up to one year. As with all antibodies care should be taken to avoid repeated freeze thaw cycles. Antibodies should not be exposed to prolonged high temperatures.

**Note**

For research use only

**Application notes**

PID antibody can be used for detection of PID by Western blot at 1 µg/mL. Antibody can also be used for immunocytochemistry starting at 10 µg/mL and Immunohistochemistry starting at 2.5 µg/mL. For immunofluorescence start at 10 µg/mL. Antibody validated: Western Blot in human samples; Immunohistochemistry in human samples; Immunocytochemistry in human samples and Immunofluorescence in human samples. All other applications and species not yet tested.

**Isotype**

IgG

**Clonality**

Polyclonal

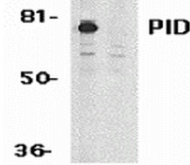
**MW**

Predicted: 73 kDa Observed: 75 kDa

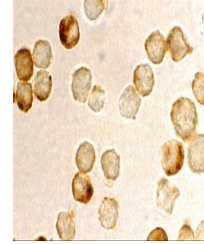
**Uniprot ID**
[O94776](#)
**NCBI**
[AAG02241](#)
**Dilution Range**

PID antibody can be used for detection of PID by Western blot at 1 µg/mL. Antibody can also be used for immunocytochemistry starting at 10 µg/mL and

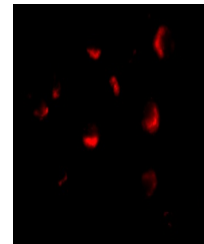
A B



Western blot analysis of PID expression ...



Immunocytochemistry staining of HeLa usi...



Immunofluorescence of PID in HeLa cells ...