
Product Datasheet

PINK1 Antibody (orb1238781)

Description

PINK1 Antibody

Species/Host

Rabbit

Reactivity

Human, Mouse, Rat

Conjugation

Unconjugated

Tested Applications

ELISA, IF, IHC-P, WB

Applications
Immunogen

PINK1 antibody was raised against a 16 amino acid peptide near the amino terminus of human PINK1. The immunogen is located within amino acids 120 - 170 of PINK1.

Target

PINK1

Preservatives

PINK1 antibody is supplied in PBS containing 0.02% sodium azide.

Form/Appearance

Liquid

Concentration

1 mg/mL

Storage

PINK1 antibody can be stored at 4°C for three months and -20°C, stable for up to one year.

Note

For research use only

Application notes

PINK1 antibody can be used for detection of PINK1 by Western blot at 1 - 2 µg/ml. Antibody can also be used for immunohistochemistry starting at 5 µg/mL. For immunofluorescence start at 20 µg/mL. Antibody validated: Western Blot in human, mouse, and rat samples; Immunohistochemistry in mouse samples and Immunofluorescence in mouse samples. All other applications and species not yet tested.

Isotype

IgG

Clonality

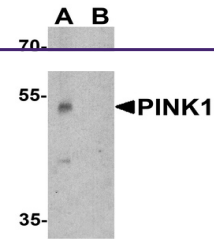
Polyclonal

MW

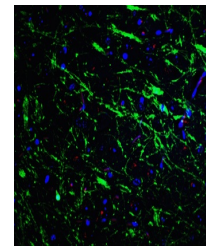
Predicted: 55 kDa Observed: 53 kDa

Uniprot ID
[Q9BXM7](#)
NCBI
[NP_115785](#)
Dilution Range

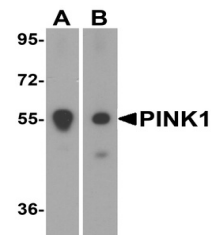
PINK1 antibody can be used for detection of PINK1 by Western blot at 1 - 2 µg/ml. Antibody can also be used for immunohistochemistry starting at 5 µg/mL. For immunofluorescence start at 20 µg/mL. Antibody validated: Western Blot in human, mouse, and rat samples; Immunohistochemistry in mouse samples and Immunofluorescence in mouse samples. All other applications and species not yet tested.



Western blot analysis of PINK1 in A431 c...



Immunofluorescence of PINK1 in mouse bra...



Western blot analysis of PINK1 in (A) mo...