

---

## Product Datasheet

### PLXDC2 Antibody (orb1238779)

**Description**

PLXDC2 Antibody

**Species/Host**

Rabbit

**Reactivity**

Human, Mouse, Rat

**Conjugation**

Unconjugated

**Tested Applications**

ELISA, IF, IHC-P, WB

**Immunogen**

Plxdc2 antibody was raised against a 18 amino acid synthetic peptide from near the amino terminus of human Plxdc2. The immunogen is located within amino acids 40 - 90 of Plxdc2.

**Target**

PLXDC2

**Preservatives**

Plxdc2 Antibody is supplied in PBS containing 0.02% sodium azide.

**Form/Appearance**

Liquid

**Concentration**

1 mg/mL

**Storage**

Plxdc2 antibody can be stored at 4°C for three months and -20°C, stable for up to one year. As with all antibodies care should be taken to avoid repeated freeze thaw cycles. Antibodies should not be exposed to prolonged high temperatures.

**Note**

For research use only

**Application notes**

Plxdc2 antibody can be used for detection of Plxdc2 by Western blot at 1 and 2 µg/mL. Antibody can also be used for immunohistochemistry starting at 2.5 µg/mL. For immunofluorescence start at 20 µg/mL. Antibody validated: Western Blot in human and mouse samples; Immunohistochemistry in human samples and Immunofluorescence in human samples. All other applications and species not yet tested.

**Isotype**

IgG

**Clonality**

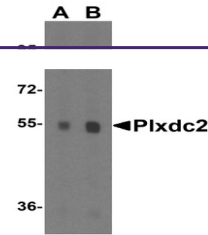
Polyclonal

**MW**

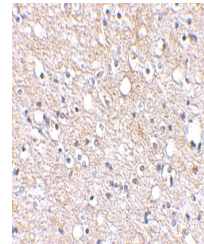
Predicted: 55 kDa Observed: 55 kDa

**Uniprot ID**
[Q6UX71](#)
**NCBI**
[Q6UX71](#)
**Dilution Range**

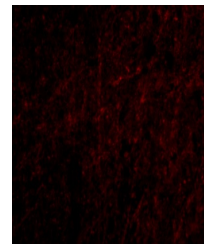
Plxdc2 antibody can be used for detection of Plxdc2 by Western blot at 1 and 2 µg/mL. Antibody can also be used for immunohistochemistry starting at 2.5 µg/mL. For immunofluorescence start at 20



Western blot analysis of Plxdc2 in human...



Immunohistochemical staining of human br...



Immunofluorescence of Plxdc2 in Human Br...