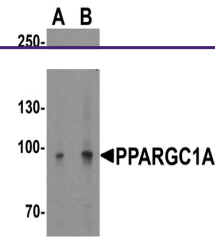
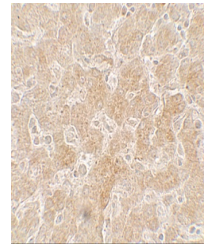

Product Datasheet

PPARGC1A Antibody (orb1238778)

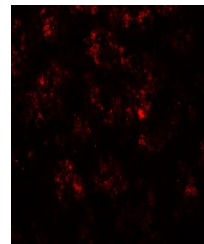
Description	PPARGC1A Antibody
Species/Host	Rabbit
Reactivity	Human, Mouse, Rat
Conjugation	Unconjugated
Tested Applications	ELISA, IF, IHC-P, WB
Immunogen	PPARGC1A antibody was raised against a 19 amino acid peptide near the carboxy terminus of human PPARGC1A. The immunogen is located within the last 50 amino acids of PPARGC1A.
Target	PPARGC1A
Preservatives	PPARGC1A antibody is supplied in PBS containing 0.02% sodium azide.
Form/Appearance	Liquid
Concentration	1 mg/mL
Storage	PPARGC1A antibody can be stored at 4°C up to one year. Antibodies should not be exposed to prolonged high temperatures.
Note	For research use only
Application notes	PPARGC1A antibody can be used for detection of PPARGC1A by Western blot at 1 - 2 µg/ml. Antibody can also be used for Immunohistochemistry starting at 5 µg/mL. For immunofluorescence start at 20 µg/mL. Antibody validated: Western Blot in human and mouse samples; Immunohistochemistry in human samples and Immunofluorescence in human samples. All other applications and species not yet tested.
Isotype	IgG
Clonality	Polyclonal
MW	Predicted: 90 kDa Observed: 88 kDa
Uniprot ID	Q9UBK2
NCBI	NP_037393
Dilution Range	PPARGC1A antibody can be used for detection of PPARGC1A by Western blot at 1 - 2 µg/ml. Antibody can also be used for Immunohistochemistry starting at 5 µg/mL. For immunofluorescence start at 20 µg/mL. Antibody validated: Western Blot in human and mouse samples; Immunohistochemistry in



Western blot analysis of PPARGC1A in mou...



Immunohistochemistry of PPARGC1A in huma...



Immunofluorescence of PPARGC1A in human ...