

---

## Product Datasheet

### CRADD Antibody (orb1238776)

**Description**

CRADD Antibody

**Species/Host**

Rabbit

**Reactivity**

Human

**Conjugation**

Unconjugated

**Tested Applications**

ELISA, ICC, IF, WB

**Immunogen**

RAIDD antibody was raised against a 19 amino acid peptide near the center of human RAIDD. The immunogen is located within amino acids 90 - 140 of RAIDD.

**Target**

CRADD

**Preservatives**

RAIDD Antibody is supplied in PBS containing 0.02% sodium azide.

**Form/Appearance**

Liquid

**Concentration**

1 mg/ml

**Storage**

RAIDD antibody can be stored at 4°C for three months and -20°C, stable for up to one year. As with all antibodies care should be taken to avoid repeated freeze thaw cycles. Antibodies should not be exposed to prolonged high temperatures.

**Note**

For research use only

**Application notes**

RAIDD antibody can be used for detection of RAIDD by Western blot at 0.5 - 1 µg/mL. A 22 kDa band should be detected. Antibody can also be used for immunocytochemistry starting at 5 µg/mL. For immunofluorescence start at 20 µg/mL. Antibody validated: Western Blot in human samples; Immunocytochemistry in human samples and Immunofluorescence in human samples. All other applications and species not yet tested.

**Isotype**

IgG

**Clonality**

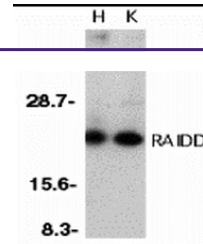
Polyclonal

**MW**

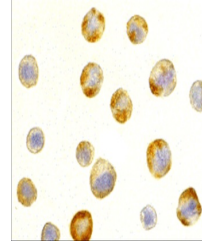
22 kDa

**Uniprot ID**
[P78560](#)
**NCBI**
[AAB42217](#)
**Dilution Range**

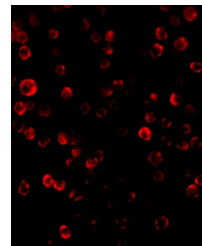
RAIDD antibody can be used for detection of RAIDD by Western blot at 0.5 - 1 µg/mL. A 22 kDa band should be detected. Antibody can also be used for immunocytochemistry starting at 5 µg/mL. For



Western blot analysis of RAIDD in whole ...



Immunocytochemistry of RAIDD in HeLa cel...



Immunofluorescence of RAIDD in HeLa cell...