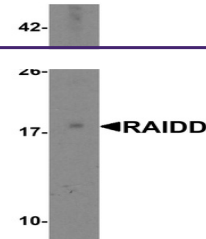


---

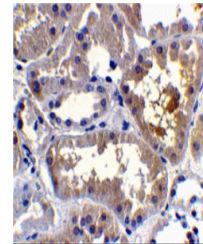
## Product Datasheet

### CRADD Antibody (orb1238774)

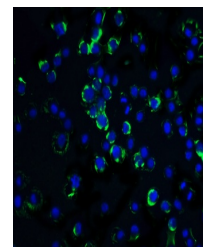
<b>Description</b>	CRADD Antibody
<b>Species/Host</b>	Rabbit
<b>Reactivity</b>	Human
<b>Conjugation</b>	Unconjugated
<b>Tested Applications</b>	ELISA, ICC, IF, IHC-P, WB
<b>Immunogen</b>	RAIDD antibody was raised against a peptide corresponding to amino acids near the carboxy terminus of human RAIDD. The immunogen is located within the last 50 amino acids of RAIDD.
<b>Target</b>	CRADD
<b>Preservatives</b>	RAIDD Antibody is supplied in PBS containing 0.02% sodium azide.
<b>Form/Appearance</b>	Liquid
<b>Concentration</b>	1 mg/ml
<b>Storage</b>	RAIDD antibody can be stored at 4°C for three months and -20°C, stable for up to one year. As with all antibodies care should be taken to avoid repeated freeze thaw cycles. Antibodies should not be exposed to prolonged high temperatures.
<b>Note</b>	For research use only
<b>Application notes</b>	RAIDD antibody can be used for detection of RAIDD by Western blot at 2 µg/mL. A 22 kDa band should be detected. Antibody can also be used for immunohistochemistry starting at 10 µg/mL. Antibody validated: Western Blot in human samples; Immunohistochemistry in human samples; Immunocytochemistry in human samples and Immunofluorescence in human samples. All other applications and species not yet tested.
<b>Isotype</b>	IgG
<b>Clonality</b>	Polyclonal
<b>MW</b>	Predicted: 22 kDa Observed: 18 kDa
<b>Uniprot ID</b>	<a href="#">P78560</a>
<b>NCBI</b>	<a href="#">AAB42217</a>
<b>Dilution Range</b>	RAIDD antibody can be used for detection of RAIDD by Western blot at 2 µg/mL. A 22 kDa band should be detected. Antibody can also be used for immunohistochemistry starting at 10



Western blot analysis of RAIDD in MCF7 t...



Immunohistochemistry of RAIDD in human k...



Immunofluorescence of RAIDD in HeLa cell...