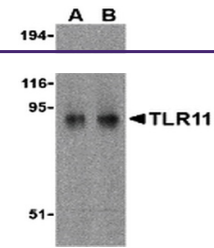
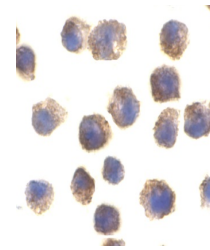

Product Datasheet

Tlr11 Antibody (orb1238767)

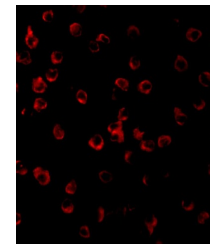
Description	Tlr11 Antibody
Species/Host	Rabbit
Reactivity	Mouse
Conjugation	Unconjugated
Tested Applications	ELISA, ICC, IF, WB
Immunogen	TLR11 antibody was raised against a peptide corresponding to 15 amino acids near the carboxy terminus of mouse TLR11. The immunogen is located within the last 50 amino acids of TLR11.
Target	Tlr11
Preservatives	TLR11 Antibody is supplied in PBS containing 0.02% sodium azide.
Form/Appearance	Liquid
Concentration	1 mg/mL
Storage	TLR11 antibody can be stored at 4°C for three months and -20°C, stable for up to one year. As with all antibodies care should be taken to avoid repeated freeze thaw cycles. Antibodies should not be exposed to prolonged high temperatures.
Note	For research use only
Application notes	TLR11 antibody can be used for detection of TLR11 by Western blot at 0.5 to 1 µg/mL. Antibody can also be used for immunocytochemistry starting at 2 µg/mL. For immunofluorescence start at 10 µg/mL. Antibody validated: Western Blot in mouse samples; Immunocytochemistry in mouse samples and Immunofluorescence in mouse samples. All other applications and species not yet tested.
Isotype	IgG
Clonality	Polyclonal
Uniprot ID	Q6R5P0
NCBI	NP_991388
Dilution Range	TLR11 antibody can be used for detection of TLR11 by Western blot at 0.5 to 1 µg/mL. Antibody can also be used for immunocytochemistry starting at 2 µg/mL. For immunofluorescence start at 10 µg/mL. Antibody validated: Western Blot in mouse samples; Immunocytochemistry in mouse samples and



Western blot analysis of TLR11 in RAW264.7 cells.



Immunocytochemical staining of RAW264.7 cells.



Immunofluorescence of TLR11 in Raw264.7 cells.