
Product Datasheet

S1PR1 Antibody (orb1238746)

Description

S1PR1 Antibody

Species/Host

Rabbit

Reactivity

Human, Mouse, Rat

Conjugation

Unconjugated

Tested Applications

ELISA, IF, IHC-P, WB

Immunogen

S1P1 antibody was raised against a 14 amino acid synthetic peptide near the carboxy terminus of the human S1P1. The immunogen is located within the last 50 amino acids of S1P1.

Target

S1PR1

Preservatives

S1P1 Antibody is supplied in PBS containing 0.02% sodium azide.

Form/Appearance

Liquid

Concentration

1 mg/mL

Storage

S1P1 antibody can be stored at 4°C for three months and -20°C, stable for up to one year. As with all antibodies care should be taken to avoid repeated freeze thaw cycles. Antibodies should not be exposed to prolonged high temperatures.

Note

For research use only

Application notes

S1P1 antibody can be used for detection of S1P1 by Western blot at 1 - 2 µg/mL. Antibody can also be used for immunohistochemistry starting at 2.5 µg/mL. Antibody validated: Western Blot in mouse samples; Immunohistochemistry in mouse samples and Immunofluorescence in mouse samples. All other applications and species not yet tested.

Isotype

IgG

Clonality

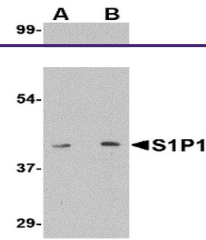
Polyclonal

MW

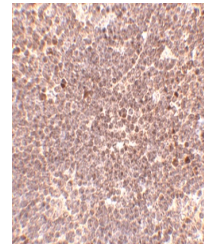
Predicted: 42 kDa Observed: 42 kDa

Uniprot ID
[P21453](#)
NCBI
[NP_001391](#)
Dilution Range

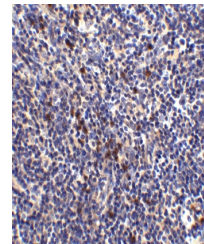
S1P1 antibody can be used for detection of S1P1 by Western blot at 1 - 2 µg/mL. Antibody can also be used for immunohistochemistry starting at 2.5 µg/mL. Antibody validated: Western Blot in mouse samples; Immunohistochemistry in mouse samples and Immunofluorescence in mouse samples. All



Western blot analysis of S1P1 in mouse t...



Immunohistochemistry of S1P1 in mouse th...



Immunohistochemistry of S1P1 in mouse th...