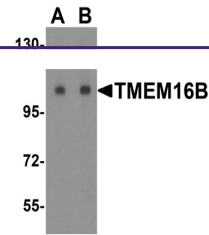
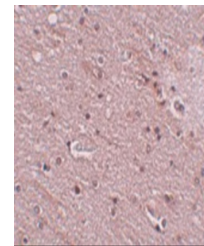

Product Datasheet

ANO2 Antibody (orb1238741)

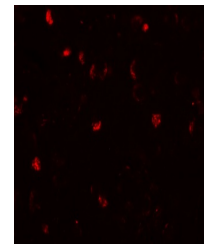
Description	ANO2 Antibody
Species/Host	Rabbit
Reactivity	Human, Mouse, Rat
Conjugation	Unconjugated
Tested Applications	ELISA, IF, IHC-P, WB
Immunogen	TMEM16B antibody was raised against a 19 amino acid synthetic peptide from near the amino terminus of human TMEM16B. The immunogen is located within the first 50 amino acids of TMEM16B.
Target	ANO2
Preservatives	TMEM16B Antibody is supplied in PBS containing 0.02% sodium azide.
Form/Appearance	Liquid
Concentration	1 mg/mL
Storage	TMEM16B antibody can be stored at 4°C up to one year. Antibodies should not be exposed to prolonged high temperatures.
Note	For research use only
Application notes	TMEM16B antibody can be used for detection of TMEM16B by Western blot at 1 - 2 µg/mL. Antibody can also be used for immunohistochemistry starting at 5 µg/mL. For immunofluorescence start at 20 µg/mL. Antibody validated: Western Blot in human samples; Immunohistochemistry in human samples and Immunofluorescence in human samples. All other applications and species not yet tested.
Isotype	IgG
Clonality	Polyclonal
MW	Predicted: 110 kDa Observed: 107 kDa
Uniprot ID	Q9NQ90
NCBI	NP_001265525
Dilution Range	TMEM16B antibody can be used for detection of TMEM16B by Western blot at 1 - 2 µg/mL. Antibody can also be used for immunohistochemistry starting at 5 µg/mL. For immunofluorescence start at 20 µg/mL. Antibody validated: Western Blot in human samples; Immunohistochemistry in human samples and Immunofluorescence in human samples. All other



Western blot analysis of TMEM16B in huma...



Immunohistochemistry of TMEM16B in human...



Immunofluorescence of TMEM16B in Human B...