

---

## Product Datasheet

### TMEM184A Antibody (orb1238740)

**Description**

TMEM184A Antibody

**Species/Host**

Rabbit

**Reactivity**

Human, Mouse, Rat

**Conjugation**

Unconjugated

**Tested**

ELISA, IHC-P, WB

**Applications**
**Immunogen**

TMEM184A antibody was raised against a 16 amino acid synthetic peptide near the carboxy terminus of human TMEM184A. The immunogen is located within the last 50 amino acids of TMEM184A.

**Target**

TMEM184A

**Preservatives**

TMEM184A Antibody is supplied in PBS containing 0.02% sodium azide.

**Form/Appearance**

Liquid

**Concentration**

1 mg/mL

**Storage**

TMEM184A antibody can be stored at 4°C for up to one year. Antibodies should not be exposed to prolonged high temperatures.

**Note**

For research use only

**Application notes**

TMEM184A antibody can be used for detection of TMEM184A by Western blot at 1 µg/mL. Antibody can also be used for immunohistochemistry starting at 5 µg/mL. Antibody validated: Western Blot in rat samples and Immunohistochemistry in human samples. All other applications and species not yet tested.

**Isotype**

IgG

**Clonality**

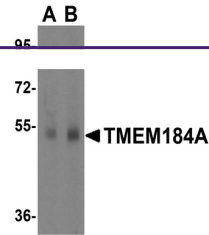
Polyclonal

**MW**

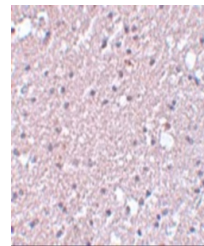
Predicted: 45 kDa Observed: 52 kDa

**Uniprot ID**
[Q6ZMB5](#)
**NCBI**
[NP\\_001091089](#)
**Dilution Range**

TMEM184A antibody can be used for detection of TMEM184A by Western blot at 1 µg/mL. Antibody can also be used for immunohistochemistry starting at 5 µg/mL. Antibody validated: Western Blot in rat samples and Immunohistochemistry in human samples. All other applications and species not yet tested.



Western blot analysis of TMEM184A in human samples.



Immunohistochemistry of TMEM184A in human tissue.