

---

## Product Datasheet

### TMEM184B Antibody (orb1238739)

**Description**

TMEM184B Antibody

**Species/Host**

Rabbit

**Reactivity**

Human, Mouse, Rat

**Conjugation**

Unconjugated

**Tested Applications**

ELISA, IF, IHC-P, WB

**Immunogen**

TMEM184B antibody was raised against a 15 amino acid synthetic peptide near the carboxy terminus of human TMEM184B. The immunogen is located within the last 50 amino acids of TMEM184B.

**Target**

TMEM184B

**Preservatives**

TMEM184B Antibody is supplied in PBS containing 0.02% sodium azide.

**Form/Appearance**

Liquid

**Concentration**

1 mg/mL

**Storage**

TMEM184B antibody can be stored at 4°C for three months and -20°C, stable for up to one year. As with all antibodies care should be taken to avoid repeated freeze thaw cycles. Antibodies should not be exposed to prolonged high temperatures.

**Note**

For research use only

**Application notes**

TMEM184B antibody can be used for detection of TMEM184B by Western blot at 1 - 2 µg/mL. Antibody can also be used for immunohistochemistry starting at 5 µg/mL. For immunofluorescence start at 20 µg/mL. Antibody validated: Western Blot in rat samples; Immunohistochemistry in human samples and Immunofluorescence in human samples. All other applications and species not yet tested.

**Isotype**

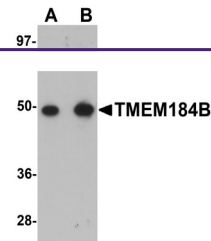
IgG

**Clonality**

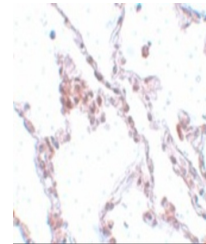
Polyclonal

**Uniprot ID**
[Q9Y519](#)
**NCBI**
[NP\\_036396](#)
**Dilution Range**

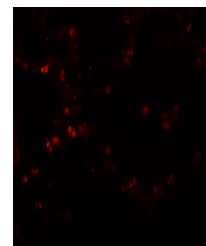
TMEM184B antibody can be used for detection of TMEM184B by Western blot at 1 - 2 µg/mL. Antibody can also be used for immunohistochemistry starting at 5 µg/mL. For immunofluorescence start at 20 µg/mL. Antibody validated: Western Blot in rat samples; Immunohistochemistry in human samples



Western blot analysis of TMEM184B in rat...



Immunohistochemistry of TMEM184B in huma...



Immunofluorescence of TMEM184B in human ...