
Product Datasheet

TMEM184C Antibody (orb1238738)

Description

TMEM184C Antibody

Species/Host

Rabbit

Reactivity

Human, Mouse, Rat

Conjugation

Unconjugated

Tested Applications

ELISA, IF, IHC-P, WB

Immunogen

TMEM184C antibody was raised against a 15 amino acid synthetic peptide near the carboxy terminus of human TMEM184C. The immunogen is located within amino acids 340 - 390 of TMEM184C.

Target

TMEM184C

Preservatives

TMEM184C Antibody is supplied in PBS containing 0.02% sodium azide.

Form/Appearance

Liquid

Concentration

1 mg/mL

Storage

TMEM184C antibody can be stored at 4°C for three months and -20°C, stable for up to one year. As with all antibodies care should be taken to avoid repeated freeze thaw cycles. Antibodies should not be exposed to prolonged high temperatures.

Note

For research use only

Application notes

TMEM184C antibody can be used for detection of TMEM184C by Western blot at 1 µg/mL. Antibody can also be used for immunohistochemistry starting at 5 µg/mL. For immunofluorescence start at 20 µg/mL. Antibody validated: Western Blot in mouse samples; Immunohistochemistry in mouse samples and Immunofluorescence in mouse samples. All other applications and species not yet tested.

Isotype

IgG

Clonality

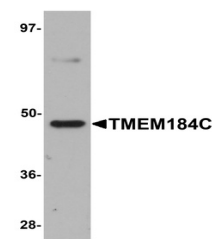
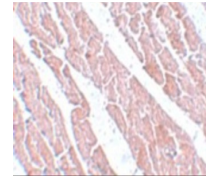
Polyclonal

Uniprot ID
[Q9NVA4](#)
NCBI
[NP_060711](#)
Dilution Range

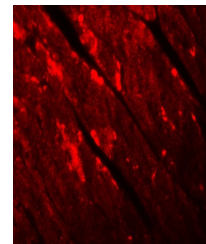
TMEM184C antibody can be used for detection of TMEM184C by Western blot at 1 µg/mL. Antibody can also be used for immunohistochemistry starting at 5 µg/mL. For immunofluorescence start at 20 µg/mL. Antibody validated: Western Blot in mouse samples; Immunohistochemistry in mouse samples



Immunohistochemistry of TMEM184C in mouse...



Western blot analysis of TMEM184C in mouse...



Immunofluorescence of TMEM184C in mouse ...