
Product Datasheet

TMEM18 Antibody (orb1238737)

Description

TMEM18 Antibody

Species/Host

Rabbit

Reactivity

Human, Mouse, Rat

Conjugation

Unconjugated

Tested

ELISA, IF, IHC-P, WB

Applications
Immunogen

TMEM18 antibody was raised against a 15 amino acid synthetic peptide near the carboxy terminus of human TMEM18. The immunogen is located within the last 50 amino acids of TMEM18.

Target

TMEM18

Preservatives

TMEM18 Antibody is supplied in PBS containing 0.02% sodium azide.

Form/Appearance

Liquid

Concentration

1 mg/mL

Storage

TMEM18 antibody can be stored at 4°C for three months and -20°C, stable for up to one year. As with all antibodies care should be taken to avoid repeated freeze thaw cycles. Antibodies should not be exposed to prolonged high temperatures.

Note

For research use only

Application notes

TMEM18 antibody can be used for detection of TMEM18 by Western blot at 0.5 - 1 µg/mL. Antibody can also be used for immunohistochemistry starting at 2.5 µg/mL. For immunofluorescence start at 20 µg/mL. Antibody validated: Western Blot in rat samples; Immunohistochemistry in mouse samples and Immunofluorescence in mouse samples. All other applications and species not yet tested.

Isotype

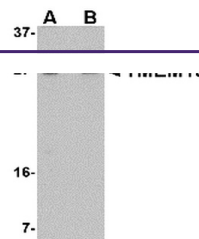
IgG

Clonality

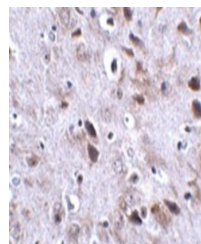
Polyclonal

Uniprot ID
[Q96B42](#)
NCBI
[Q96B42](#)
Dilution Range

TMEM18 antibody can be used for detection of TMEM18 by Western blot at 0.5 - 1 µg/mL. Antibody can also be used for immunohistochemistry starting at 2.5 µg/mL. For immunofluorescence start at 20 µg/mL. Antibody validated: Western Blot in rat samples; Immunohistochemistry in mouse samples

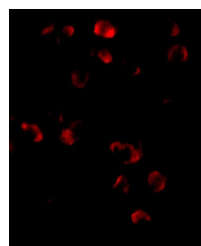


Western blot analysis of TMEM18 in rat b...



Immunohistochemistry of TMEM18 in mouse

...



Immunofluorescence of TMEM18 in Mouse Br...