
Product Datasheet

TMEM214 Antibody (orb1238734)

Description

TMEM214 Antibody

Species/Host

Rabbit

Reactivity

Human, Mouse, Rat

Conjugation

Unconjugated

Tested Applications

ELISA, ICC, IF, WB

Immunogen

TMEM214 antibody was raised against a 17 amino acid synthetic peptide near the amino terminus of human TMEM214. The immunogen is located within amino acids 70 - 120 of TMEM214.

Target

TMEM214

Preservatives

TMEM214 Antibody is supplied in PBS containing 0.02% sodium azide.

Form/Appearance

Liquid

Concentration

1 mg/mL

Storage

TMEM214 antibody can be stored at 4°C for three months and -20°C, stable for up to one year. As with all antibodies care should be taken to avoid repeated freeze thaw cycles. Antibodies should not be exposed to prolonged high temperatures.

Note

For research use only

Application notes

TMEM214 antibody can be used for detection of TMEM214 by Western blot at 1 - 2 µg/mL. Antibody can also be used for immunocytochemistry starting at 5 µg/mL. For immunofluorescence start at 20 µg/mL. Antibody validated: Western Blot in mouse samples; Immunocytochemistry in mouse samples and Immunofluorescence in mouse samples. All other applications and species not yet tested.

Isotype

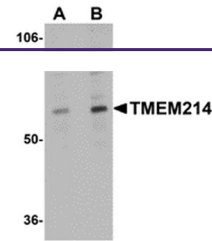
IgG

Clonality

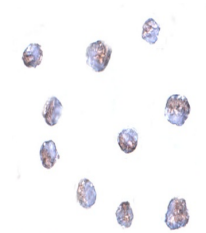
Polyclonal

Uniprot ID
[Q6NUQ4](#)
NCBI
[NP_060197](#)
Dilution Range

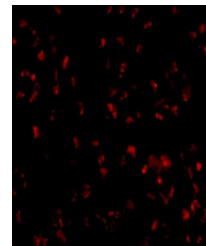
TMEM214 antibody can be used for detection of TMEM214 by Western blot at 1 - 2 µg/mL. Antibody can also be used for immunocytochemistry starting at 5 µg/mL. For immunofluorescence start at 20 µg/mL. Antibody validated: Western Blot in mouse samples; Immunocytochemistry in mouse samples



Western blot analysis of TMEM214 in A20 ...



Immunocytochemistry of TMEM214 in A20 ce...



Immunofluorescence of TMEM214 in A20 cel...