

---

## Product Datasheet

### TMEM38B Antibody (orb1238732)

**Description**

TMEM38B Antibody

**Species/Host**

Rabbit

**Reactivity**

Human, Mouse, Rat

**Conjugation**

Unconjugated

**Tested Applications**

ELISA, IF, IHC-P, WB

**Applications**
**Immunogen**

TMEM38B antibody was raised against a 17 amino acid synthetic peptide from near the carboxy terminus of human TMEM38B. The immunogen is located within the last 50 amino acids of TMEM38B.

**Target**

TMEM38B

**Preservatives**

TMEM38B Antibody is supplied in PBS containing 0.02% sodium azide.

**Form/Appearance**

Liquid

**Concentration**

1 mg/mL

**Storage**

TMEM38B antibody can be stored at 4°C for three months and -20°C, stable for up to one year. As with all antibodies care should be taken to avoid repeated freeze thaw cycles. Antibodies should not be exposed to prolonged high temperatures.

**Note**

For research use only

**Application notes**

TMEM38B antibody can be used for detection of TMEM38B by Western blot at 1 - 2 µg/mL. Antibody can also be used for immunohistochemistry starting at 5 µg/mL. For immunofluorescence start at 20 µg/mL. Antibody validated: Western Blot in rat samples; Immunohistochemistry in mouse samples and Immunofluorescence in mouse samples. All other applications and species not yet tested.

**Isotype**

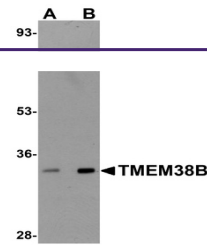
IgG

**Clonality**

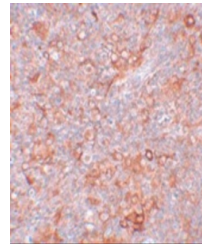
Polyclonal

**Uniprot ID**
[Q9NVV0](#)
**NCBI**
[NP\\_060582](#)
**Dilution Range**

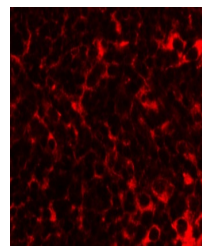
TMEM38B antibody can be used for detection of TMEM38B by Western blot at 1 - 2 µg/mL. Antibody can also be used for immunohistochemistry starting at 5 µg/mL. For immunofluorescence start at 20 µg/mL. Antibody validated: Western Blot in rat samples; Immunohistochemistry in mouse samples



Western blot analysis of TMEM38B in rat ...



Immunohistochemistry of TMEM38B in mouse...



Immunofluorescence of TMEM38B in mouse t...