
Product Datasheet

**SARS-CoV-2 Spike P681H Antibody [1G8D11]
(Alpha, Mu Variant) (orb1238731)**

Description

SARS-CoV-2 Spike P681H Antibody [1G8D11]

Species/Host

Mouse

Reactivity

Virus

Conjugation

Unconjugated

Tested Applications

ELISA, WB

Immunogen

Anti-SARS-CoV-2 (COVID-19) P681H Mutant Specific Spike P681H antibody (orb1238731) was raised against a peptide corresponding to 12 amino acids near the center of SARS-CoV-2 Alpha variant (B.1.1.7) Spike protein. The immunogen is located within 650-700 amino acids of SARS-CoV-2 Alpha Variant (B.1.1.7, UK) Spike protein.

Target

S

Preservatives

SARS-CoV-2 (COVID-19) P681H Mutant Specific Spike antibody is supplied in PBS containing 0.02% sodium azide.

Form/Appearance

Liquid

Concentration

1 mg/mL

Storage

SARS-CoV-2 (COVID-19) P681H Mutant Specific Spike antibody can be stored at 4°C for three months and -20°C, stable for up to one year. As with all antibodies care should be taken to avoid repeated freeze thaw cycles. Antibodies should not be exposed to prolonged high temperatures.

Note

For research use only

Isotype

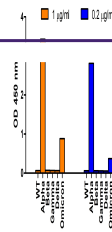
IgG2a, Kappa

Clonality

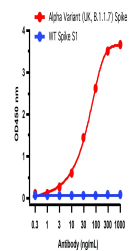
Monoclonal

Uniprot ID
[P0DTC2](#)
NCBI
[QHD43416](#)
Dilution Range

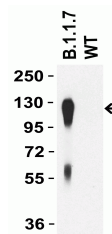
WB: 1 µg/mL. Antibody validated: Western Blot in human samples. Anti-SARS-CoV-2 (COVID-19) P681H Mutant Specific Spike antibody can specifically detect SARS-CoV-2 Alpha Variant (B.1.1.7, UK) S1 protein, but not SARS-CoV-2 WT Spike S1 protein by ELISA and WB. It can also detect mutant peptide (681H), but not WT



ELISA Validation of Alpha Variant Spike ...



ELISA Validation of P681H Mutant Specifici...



WB Validation of P681H Mutant Specific S...