

Product Datasheet

SARS-CoV-2 Spike P681H Antibody [7A4D12](Alpha, Mu Variant) (orb1238730)

Description	SARS-CoV-2 Spike P681H Antibody [7A4D12](Alpha, Mu Variant)
Species/Host	Mouse
Reactivity	Virus
Conjugation	Unconjugated
Tested Applications	ELISA, WB
Immunogen	Anti-SARS-CoV-2 (COVID-19) P681H Mutant Specific Spike P681H antibody (orb1238730) was raised against a peptide corresponding to 12 amino acids near the center of SARS-CoV-2 Alpha variant (B.1.1.7) Spike protein. The immunogen is located within 650-700 amino acids of SARS-CoV-2 Alpha Variant (B.1.1.7, UK) Spike protein.
Target	S
Preservatives	SARS-CoV-2 (COVID-19) P681H Mutant Specific Spike antibody is supplied in PBS containing 0.02% sodium azide.
Form/Appearance	Liquid
Concentration	1 mg/mL
Storage	Maintain refrigerated at 2-8°C for up to 2 weeks. For long term storage store at -20°C in small aliquots to prevent freeze-thaw cycles.
Note	For research use only
Isotype	IgG2a, Kappa
Clonality	Monoclonal
Clone Number	7A4D12

Biorbyt Ltd.

7 Signet Court, Swann's Road,
Cambridge, CB5 8LA, United Kingdom
Email: info@biorbyt.com, support@biorbyt.com
Phone: [+44 \(0\) 1223 859-353](tel:+44(0)1223859353) | Fax: [+1 \(415\) 651-8558](tel:+1(415)6518558)

Biorbyt LLC.

68 TW Alexander Drive,
Durham, NC, 27713, United States
Email: info@biorbyt.com, support@biorbyt.com
Phone: [+1 \(415\) 906-5211](tel:+1(415)9065211) | Fax: [+1 \(415\) 651-8558](tel:+1(415)6518558)

Uniprot ID

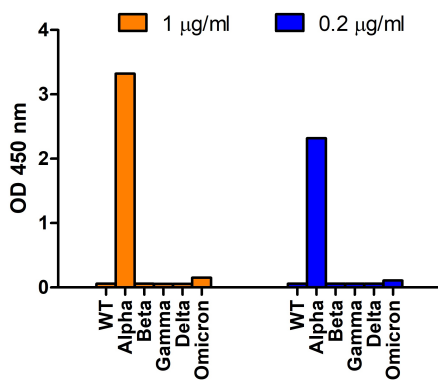
P0DTC2

NCBI

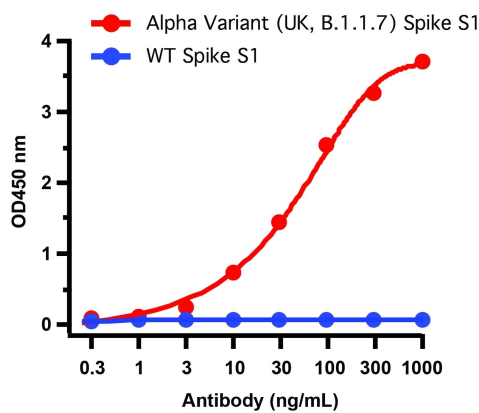
QHD43416

Expiration Date

12 months from date of receipt.



ELISA Validation of Alpha Variant Spike Antibodies with Spike S1 Protein of SARS-CoV-2 Variants. Coating Antigen: SARS-CoV-2 spike S1 proteins WT, alpha variant (B.1.1.7), beta variant (B.1.351), gamma variant (P.1), delta variant (B.1.617.2), and omicron variant (B.1.1.529), 1 µg/mL, incubate at 4°C overnight. Detection Antibodies: SARS-CoV-2 Alpha Variant Spike antibody, orb1238730, dilution: 200-1000 ng/mL, incubate at RT for 1 hr. Secondary Antibodies: Goat anti-mouse HRP at 1:5000, incubate at RT for 1 hr. SARS-CoV-2 alpha variant spike antibody (orb1238730) can specifically detect alpha variant spike S1 protein, but not spike S1 protein of WT and other tested variants by ELISA.



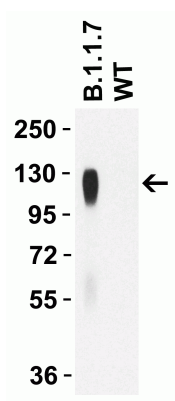
ELISA Validation of P681H Mutant Specific Spike Antibodies with SARS-CoV-2 Alpha Variant Spike S1 Protein. Coating Antigen: SARS-CoV-2 spike S1 proteins, including WT and alpha variant (B.1.1.7, UK), 1 µg/mL, incubate at 4°C overnight. Detection Antibodies: SARS-CoV-2 Alpha Variant Spike antibody, orb1238730, dilution: 0.3-1000 ng/mL, incubate at RT for 1 hr. Secondary Antibodies: Goat anti-mouse HRP at 1:5000, incubate at RT for 1 hr. SARS-CoV-2 P681H Mutant Specific Spike antibody (orb1238730) can specifically detect alpha variant spike S1 protein, but not WT spike S1 protein (orb1231589) by ELISA.

Biorbyt Ltd.

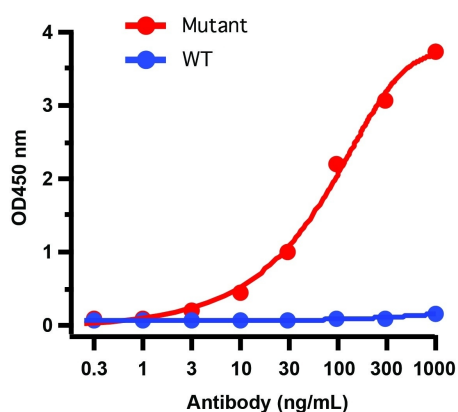
7 Signet Court, Swann's Road,
Cambridge, CB5 8LA, United Kingdom
Email: info@biorbyt.com, support@biorbyt.com
Phone: [+44 \(0\) 1223 859-353](tel:+44(0)1223859353) | Fax: [+1 \(415\) 651-8558](tel:+1(415)6518558)

Biorbyt LLC.

68 TW Alexander Drive,
Durham, NC, 27713, United States
Email: info@biorbyt.com, support@biorbyt.com
Phone: [+1 \(415\) 906-5211](tel:+1(415)9065211) | Fax: [+1 \(415\) 651-8558](tel:+1(415)6518558)



WB Validation of P681H Mutant Specific Spike Antibodies with SARS-CoV-2 Alpha Variant Spike S1 Protein. Loading: 50 ng of SARS-CoV-2 spike S1 proteins, including WT and alpha variant (B.1.1.7, UK). Detection Antibodies: SARS-CoV-2 P681H Mutant Specific Spike antibody, orb1238730, 1 µg/mL, incubate at RT for 1 hr. Secondary Antibodies: Goat anti-mouse HRP at 1:5000, incubate at RT for 1 hr. SARS-CoV-2 P681H Mutant Specific Spike antibody (orb1238730) can specifically detect alpha variant spike S1 protein, but not WT spike S1 protein (orb1231589) by WB.



ELISA Validation of P681H Mutant Specific Spike Antibodies with Mutant and WT Peptide. Coating Antigen: SARS-CoV-2 spike S1 peptides, including WT (orb1231701) and alpha variant (B.1.1.7, UK) (orb1231664), 1 µg/mL, incubate at 4°C overnight. Detection Antibodies: SARS-CoV-2 P681H Mutant Specific Spike antibody, orb1238730, dilution: 0.1-1000 ng/mL, incubate at RT for 1 hr. Secondary Antibodies: Goat anti-mouse HRP at 1:5000, incubate at RT for 1 hr. SARS-CoV-2 P681H Mutant Specific Spike antibody (orb1238730) can specifically detect alpha variant spike S1 peptide (681H, orb1231664), but not WT peptide (681P, orb1231701).

Biorbyt Ltd.

7 Signet Court, Swann's Road,
Cambridge, CB5 8LA, United Kingdom
Email: info@biorbyt.com, support@biorbyt.com
Phone: [+44 \(0\) 1223 859-353](tel:+44(0)1223859353) | Fax: [+1 \(415\) 651-8558](tel:+1(415)6518558)

Biorbyt LLC.

68 TW Alexander Drive,
Durham, NC, 27713, United States
Email: info@biorbyt.com, support@biorbyt.com
Phone: [+1 \(415\) 906-5211](tel:+1(415)9065211) | Fax: [+1 \(415\) 651-8558](tel:+1(415)6518558)