

Product Datasheet

TMEM59 Antibody (orb1238729)

Description

TMEM59 Antibody

Species/Host

Rabbit

Reactivity

Human

Conjugation

Unconjugated

Tested

ELISA, IF, IHC-P, WB

Applications
Immunogen

TMEM59 antibody was raised against a 16 amino acid synthetic peptide near amino terminus of human TMEM59. The immunogen is located within amino acids 80 - 130 of TMEM59.

Target

TMEM59

Preservatives

TMEM59 Antibody is supplied in PBS containing 0.02% sodium azide.

Form/Appearance

Liquid

Concentration

1 mg/mL

Storage

TMEM59 antibody can be stored at 4°C for three months and -20°C, stable for up to one year. As with all antibodies care should be taken to avoid repeated freeze thaw cycles. Antibodies should not be exposed to prolonged high temperatures.

Note

For research use only

Application notes

TMEM59 antibody can be used for detection of TMEM59 by Western blot at 1 µg/mL. Antibody can also be used for immunohistochemistry starting at 2.5 µg/mL. For immunofluorescence start at 20 µg/mL. Antibody validated: Western Blot in human samples; Immunohistochemistry in human samples and Immunofluorescence in human samples. All other applications and species not yet tested.

Isotype

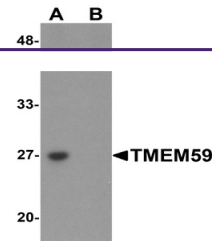
IgG

Clonality

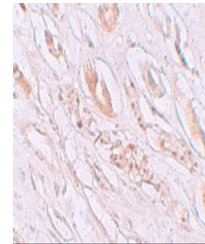
Polyclonal

Uniprot ID
[Q9BXS4](#)
NCBI
[NP_004863](#)
Dilution Range

TMEM59 antibody can be used for detection of TMEM59 by Western blot at 1 µg/mL. Antibody can also be used for immunohistochemistry starting at 2.5 µg/mL. For immunofluorescence start at 20 µg/mL. Antibody validated: Western Blot in human samples; Immunohistochemistry in human samples

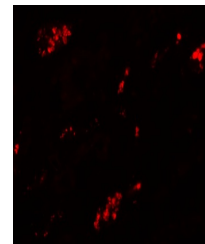


Western blot analysis of TMEM59 in human...



Immunohistochemistry of TMEM59 in human

...



Immunofluorescence of TMEM59 in human ki...