
Product Datasheet

TMEM59L Antibody (orb1238728)

Description

TMEM59L Antibody

Species/Host

Rabbit

Reactivity

Human, Mouse, Rat

Conjugation

Unconjugated

Tested Applications

ELISA, IF, IHC-P, WB

Immunogen

TMEM59L antibody was raised against a 19 amino acid synthetic peptide near carboxy terminus of human TMEM59L. The immunogen is located within amino acids 220 - 270 of TMEM59L.

Target

TMEM59L

Preservatives

TMEM59L Antibody is supplied in PBS containing 0.02% sodium azide.

Form/Appearance

Liquid

Concentration

1 mg/mL

Storage

TMEM59L antibody can be stored at 4°C for three months and -20°C, stable for up to one year. As with all antibodies care should be taken to avoid repeated freeze thaw cycles. Antibodies should not be exposed to prolonged high temperatures.

Note

For research use only

Application notes

TMEM59L antibody can be used for detection of TMEM59L by Western blot at 1 µg/mL. Antibody can also be used for immunohistochemistry starting at 2.5 µg/mL. For immunofluorescence start at 20 µg/mL. Antibody validated: Western Blot in rat samples; Immunohistochemistry in mouse samples and Immunofluorescence in mouse samples. All other applications and species not yet tested.

Isotype

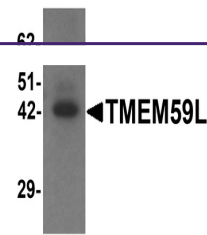
IgG

Clonality

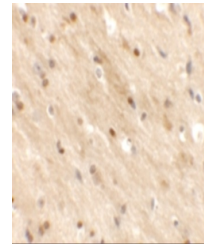
Polyclonal

Uniprot ID
[Q9UK28](#)
NCBI
[NP_036241](#)
Dilution Range

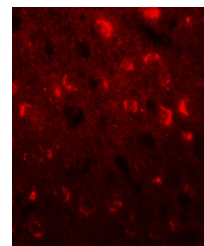
TMEM59L antibody can be used for detection of TMEM59L by Western blot at 1 µg/mL. Antibody can also be used for immunohistochemistry starting at 2.5 µg/mL. For immunofluorescence start at 20 µg/mL. Antibody validated: Western Blot in rat samples; Immunohistochemistry in mouse samples



Western blot analysis of TMEM59L in rat ...



Immunohistochemistry of TMEM59L in mouse...



Immunofluorescence of TMEM59L in mouse b...