
Product Datasheet

SARS-CoV-2 (COVID-19) Envelope Antibody (orb1238718)

Description

SARS-CoV-2 (COVID-19) Envelope Antibody

Species/Host

Rabbit

Reactivity

Virus

Conjugation

Unconjugated

Tested

ELISA, IHC, WB

Applications
Immunogen

Anti-SARS-CoV-2 (COVID-19) Envelope antibody (orb1238718) was raised against a peptide corresponding to 14 amino acids near the carboxyl terminus of SARS-CoV-2 (COVID-19) Envelope protein. The immunogen is located within the last 50 amino acids of SARS-CoV-2 (COVID-19) Envelope protein.

Target

E

Preservatives

SARS-CoV-2 (COVID-19) Envelope Antibody is supplied in PBS containing 0.02% sodium azide.

Form/Appearance

Liquid

Concentration

1 mg/mL

Storage

SARS-CoV-2 (COVID-19) Envelope antibody can be stored at 4°C up to one year. Antibodies should not be exposed to prolonged high temperatures.

Note

For research use only

Isotype

IgG

Clonality

Polyclonal

Uniprot ID

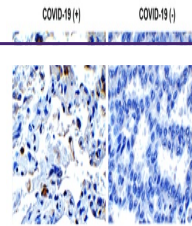
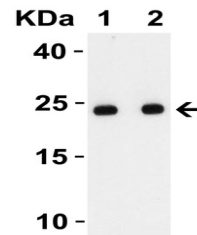
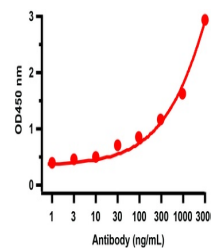
QHD43418

NCBI
[QHD43418](https://www.ncbi.nlm.nih.gov/protein/QHD43418)
Dilution Range

IHC: 0.5 µg/mL; WB: 1-2 µg/mL; Antibody validated: Immunohistochemistry in human samples. SARS-CoV-2 (COVID-19) Envelope antibody can detect 2 ng of free peptide at 1 µg/mL in ELISA. It can detect SARS-CoV-2 Envelope recombinant protein by ELISA and WB. All other applications and species not yet tested.

Expiration Date

12 months from date of receipt.


 Immunohistochemistry
Validation of SARS-...

 Western Blot
Validation with SARS-
CoV-2 ...

 ELISA Validation with
SARS-CoV-2 Envelop...