
Product Datasheet

**SARS-CoV-2 (COVID-19) Spike P26S Antibody
[5G12G11] (Gamma Variant) (orb1238709)**

Description

SARS-CoV-2 (COVID-19) Spike P26S Antibody

Species/Host

Mouse

Reactivity

Virus

Conjugation

Unconjugated

Tested Applications

ELISA, WB

Immunogen

Anti-SARS-CoV-2 Spike P26S (Gamma Variant) antibody (orb1238709) was raised against a peptide corresponding to 11 amino acids near the amino terminus of SARS-CoV-2 Gamma variant (P.1) Spike protein. The immunogen is located within the first 50 amino acids of SARS-CoV-2 Gamma variant (P.1) Spike protein.

Target

S

Preservatives

SARS-CoV-2 Spike P26S (Gamma Variant) antibody is supplied in PBS containing 0.02% sodium azide.

Form/Appearance

Liquid

Concentration

1 mg/mL

Storage

SARS-CoV-2 Spike P26S (Gamma Variant) antibody can be stored at 4°C for three months and -20°C, stable for up to one year. As with all antibodies care should be taken to avoid repeated freeze thaw cycles. Antibodies should not be exposed to prolonged high temperatures.

Note

For research use only

Isotype

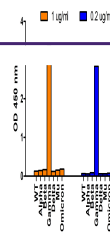
IgG1

Clonality

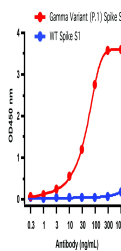
Monoclonal

Uniprot ID
[P0DTC2](#)
NCBI
[QHD43416](#)
Dilution Range

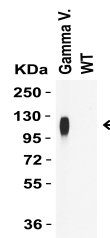
WB: 1 µg/mL. Antibody validated: Western Blot in human samples. Anti-SARS-CoV-2 Spike P26S (Gamma Variant) antibody specifically detects SARS-CoV-2 Gamma Variant (P.1) Spike S1 protein, but not SARS-CoV-2 WT and other variant Spike S1 protein by ELISA. All other applications and species



SARS-Cov-2 Spike P26S (Gamma Variant) An...



ELISA Validation of Gamma Variant Spike ...



WB Validation of Gamma Variant Spike S1 ...