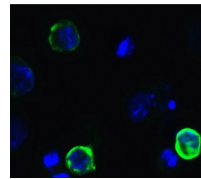
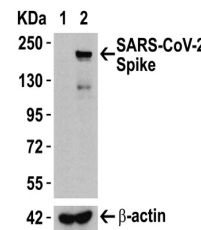
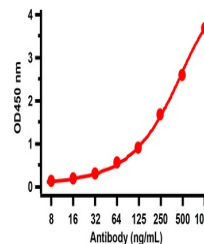

Product Datasheet

SARS-CoV-2 (COVID-19) Spike Antibody (cleavage site) (orb1238707)

Description

SARS-CoV-2 (COVID-19) Spike Antibody


 Immunofluorescence
Validation of SARS-
Co...

 Overexpression
Validation in Spike
Trans...

 ELISA Validation
with SARS-CoV-2
(COVID-...

Species/Host	Rabbit
Reactivity	Virus
Conjugation	Unconjugated
Tested Applications	ELISA, IF, WB
Immunogen	Anti-SARS-CoV-2 (COVID-19) Spike Antibody (cleavage site) (orb1238707) was raised against a peptide corresponding to 13 amino acids near the center of SARS-CoV-2 (COVID-19) Spike glycoprotein. The immunogen is located within 650-700 amino acids of SARS-CoV-2 (COVID-19) Spike protein.
Target	S
Preservatives	SARS-CoV-2 (COVID-19) Spike Antibody (cleavage site) is supplied in PBS containing 0.02% sodium azide.
Form/Appearance	Liquid
Concentration	1 mg/mL
Storage	SARS-CoV-2 (COVID-19) Spike antibody (cleavage site) can be stored at 4°C for three months and -20°C, stable for up to one year. As with all antibodies care should be taken to avoid repeated freeze thaw cycles. Antibodies should not be exposed to prolonged high temperatures.
Note	For research use only
Isotype	IgG
Clonality	Polyclonal
Uniprot ID	P0DTC2
NCBI	QHD43416
Dilution Range	WB: 2.5-5 µg/mL; IF: 20 µg/mL. Antibody validated: Western Blot in human samples; Immunofluorescence in human samples. SARS-CoV-2 (COVID-19) Spike Antibody (cleavage site) can be used for the detection of SARS-CoV-2 (COVID-19) Spike protein in ELISA. It will detect 4 ng of free peptide at 1