
Product Datasheet

TEP1 Antibody (orb1238703)

Description

TEP1 Antibody

Species/Host

Rabbit

Reactivity

Human, Mouse, Rat

Conjugation

Unconjugated

Tested Applications

ELISA, IF, IHC-P, WB

Immunogen

TP1 antibody was raised against a 20 amino acid synthetic peptide from near the amino terminus of human TP1. The immunogen is located within the first 50 amino acids of TP1.

Target

TEP1

Preservatives

TP1 Antibody is supplied in PBS containing 0.02% sodium azide.

Form/Appearance

Liquid

Concentration

1 mg/ml

Storage

TP1 antibody can be stored at 4°C for three months and -20°C, stable for up to one year. As with all antibodies care should be taken to avoid repeated freeze thaw cycles. Antibodies should not be exposed to prolonged high temperatures.

Note

For research use only

Application notes

TP1 antibody can be used for detection of TP1 by Western blot at 0.5 - 1 µg/mL. Antibody can also be used for immunohistochemistry starting at 2.5 µg/mL. For immunofluorescence start at 20 µg/mL. Antibody validated: Western Blot in human samples; Immunohistochemistry in human samples and Immunofluorescence in human samples. All other applications and species not yet tested.

Isotype

IgG

Clonality

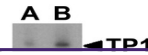
Polyclonal

MW

Predicted: 290 kDa Observed: 290 kDa

Uniprot ID
[Q99973](#)
NCBI
[AAC51107](#)
Dilution Range

TP1 antibody can be used for detection of TP1 by Western blot at 0.5 - 1 µg/mL. Antibody can also be used for immunohistochemistry starting at 2.5 µg/mL. For immunofluorescence start at 20 µg/mL. Antibody validated: Western Blot in human samples;

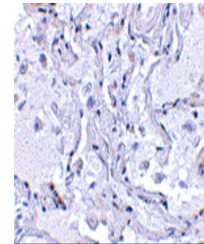


130-

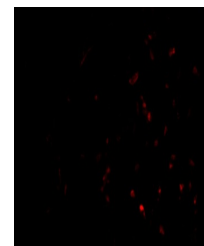
95-

72-

Western blot analysis of TP1 in human ki...



Immunohistochemical staining of human lu...



Immunofluorescence of TP-1 in Human Lung...