
Product Datasheet

TPT1 Antibody (orb1238702)

Description

TPT1 Antibody

Species/Host

Rabbit

Reactivity

Human, Mouse, Rat

Conjugation

Unconjugated

Tested Applications

ELISA, IF, IHC-P, WB

Immunogen

Rabbit polyclonal TPT1 antibody was raised against a 19 amino acid peptide near the center of human TPT1. The immunogen is located within amino acids 80 - 130 of TPT1.

Target

TPT1

Preservatives

TPT1 Antibody is supplied in PBS containing 0.02% sodium azide.

Form/Appearance

Liquid

Concentration

1 mg/mL

Storage

TPT1 antibody can be stored at 4°C for three months and -20°C, stable for up to one year.

Note

For research use only

Application notes

TPT1 antibody can be used for detection of TPT1 by Western blot at 0.5 - 1 µg/mL. Antibody validated: Western Blot in human samples; Immunohistochemistry in rat samples and Immunofluorescence in rat samples. All other applications and species not yet tested.

Isotype

IgG

Clonality

Polyclonal

MW

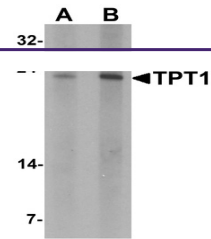
Predicted: 19 kDa

Uniprot ID
[P13693](#)
NCBI
[NP_003286](#)
Dilution Range

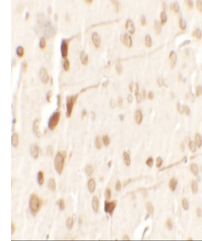
TPT1 antibody can be used for detection of TPT1 by Western blot at 0.5 - 1 µg/mL. Antibody validated: Western Blot in human samples; Immunohistochemistry in rat samples and Immunofluorescence in rat samples. All other applications and species not yet tested.

Expiration Date

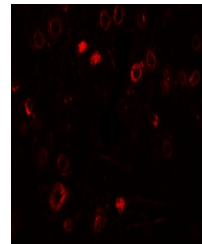
12 months from date of receipt.



Western blot analysis of TPT1 in human b...



Immunohistochemistry of TPT1 in rat brai...



Immunofluorescence of TPT1 in rat brain ...