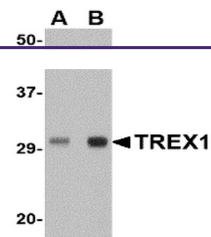
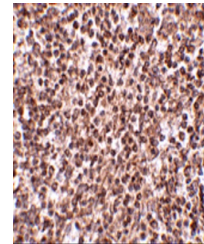

Product Datasheet

TREX1 Antibody (orb1238690)

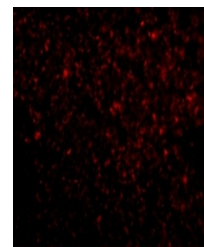
Description	TREX1 Antibody
Species/Host	Rabbit
Reactivity	Human, Mouse, Rat
Conjugation	Unconjugated
Tested Applications	ELISA, IF, IHC-P, WB
Immunogen	TREX1 antibody was raised against a 15 amino acid synthetic peptide near the center of human TREX1. The immunogen is located within amino acids 220 - 270 of TREX1.
Target	TREX1
Preservatives	TREX1 Antibody is supplied in PBS containing 0.02% sodium azide.
Form/Appearance	Liquid
Concentration	1 mg/mL
Storage	TREX1 antibody can be stored at 4°C for three months and -20°C, stable for up to one year. As with all antibodies care should be taken to avoid repeated freeze thaw cycles. Antibodies should not be exposed to prolonged high temperatures.
Note	For research use only
Application notes	TREX1 antibody can be used for detection of TREX1 by Western blot at 0.5 and 1 µg/mL. Antibody can also be used for immunohistochemistry starting at 2.5 µg/mL. For immunofluorescence start at 20 µg/mL. Antibody validated: Western Blot in human samples; Immunohistochemistry in human samples and Immunofluorescence in human samples. All other applications and species not yet tested.
Isotype	IgG
Clonality	Polyclonal
MW	Predicted: 33, 35, 41 kDa Observed: 31 kDa
Uniprot ID	Q9NSU2
NCBI	NP_057465
Dilution Range	TREX1 antibody can be used for detection of TREX1 by Western blot at 0.5 and 1 µg/mL. Antibody can also be used for immunohistochemistry starting at 2.5 µg/mL. For immunofluorescence start at 20 µg/mL. Antibody validated: Western Blot in human



Western blot analysis of TREX1 in human ...



Immunohistochemistry of TREX1 in human s...



Immunofluorescence of TREX1 in Human Spl...