

---

## Product Datasheet

### TREX2 Antibody (orb1238689)

**Description**

TREX2 Antibody

**Species/Host**

Rabbit

**Reactivity**

Human, Mouse, Rat

**Conjugation**

Unconjugated

**Tested Applications**

ELISA, IF, IHC-P, WB

**Immunogen**

TREX2 antibody was raised against a 15 amino acid synthetic peptide near the carboxy terminus of human TREX2. The immunogen is located within the last 50 amino acids of TREX2.

**Target**

TREX2

**Preservatives**

TREX2 Antibody is supplied in PBS containing 0.02% sodium azide.

**Form/Appearance**

Liquid

**Concentration**

1 mg/mL

**Storage**

TREX2 antibody can be stored at 4°C for three months and -20°C, stable for up to one year. As with all antibodies care should be taken to avoid repeated freeze thaw cycles. Antibodies should not be exposed to prolonged high temperatures.

**Note**

For research use only

**Application notes**

TREX2 antibody can be used for detection of TREX2 by Western blot at 2.5 µg/mL. Antibody can also be used for immunohistochemistry starting at 2.5 µg/mL. For immunofluorescence start at 20 µg/mL. Antibody validated: Western Blot in rat samples; Immunohistochemistry in human samples and Immunofluorescence in human samples. All other applications and species not yet tested.

**Isotype**

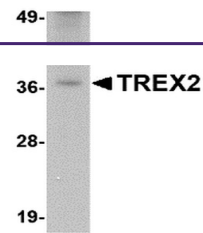
IgG

**Clonality**

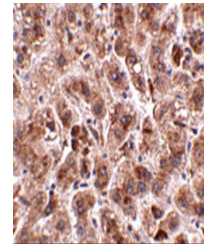
Polyclonal

**Uniprot ID**
[Q9BQ50](#)
**NCBI**
[Q9BQ50](#)
**Dilution Range**

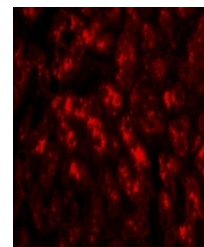
TREX2 antibody can be used for detection of TREX2 by Western blot at 2.5 µg/mL. Antibody can also be used for immunohistochemistry starting at 2.5 µg/mL. For immunofluorescence start at 20 µg/mL. Antibody validated: Western Blot in rat samples; Immunohistochemistry in human samples



Western blot analysis of TREX2 in rat li...



Immunohistochemistry of TREX2 in human l...



Immunofluorescence of TREX2 in Human Liv...