
Product Datasheet

TICAM1 Antibody (orb1238687)

Description

TICAM1 Antibody

Species/Host

Rabbit

Conjugation

Unconjugated

Tested Applications

ELISA, IF, IHC-P, WB

Immunogen

TRIF antibody was raised against a peptide corresponding to 14 amino acids near the C-terminus of human TRIF. The immunogen is located within the last 50 amino acids of TRIF.

Target

TICAM1

Preservatives

TRIF Antibody is supplied in PBS containing 0.02% sodium azide.

Form/Appearance

Liquid

Concentration

1 mg/mL

Storage

TRIF antibody can be stored at 4°C for three months and -20°C, stable for up to one year. As with all antibodies care should be taken to avoid repeated freeze thaw cycles. Antibodies should not be exposed to prolonged high temperatures.

Note

For research use only

Application notes

TRIF antibody can be used for detection of TRIF by Western blot at 1 to 2 µg/mL. Antibody can also be used for immunohistochemistry starting at 10 µg/mL. For immunofluorescence start at 10 µg/mL. Antibody validated: Western Blot in human samples; Immunohistochemistry in human samples and Immunofluorescence in human samples. All other applications and species not yet tested.

Isotype

IgG

Clonality

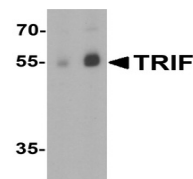
Polyclonal

MW

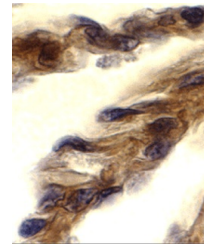
Predicted: 60 kDa Observed: 55 kDa

Uniprot ID
[Q8IU6](#)
NCBI
[NP_891549](#)
Dilution Range

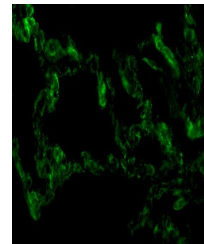
TRIF antibody can be used for detection of TRIF by Western blot at 1 to 2 µg/mL. Antibody can also be used for immunohistochemistry starting at 10 µg/mL. For immunofluorescence start at 10 µg/mL. Antibody validated: Western Blot in human samples; Immunohistochemistry in human samples

A B


Western blot analysis of TRIF in human l...



Immunohistochemistry of TRIF in human lu...



Immunofluorescence of TRIF in Human Lung...