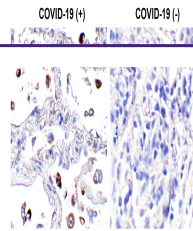

Product Datasheet

**SARS-CoV-2 (COVID-19) Spike S2 Antibody [4F10]
(orb1238686)**

Description

SARS-CoV-2 (COVID-19) Spike S2 Antibody


Species/Host

Mouse

Conjugation

Unconjugated

Tested Applications

ELISA, IF, IHC-P, WB

Immunogen

Anti-SARS-CoV-2 (COVID-19) Spike S2 antibody (orb1238686) was raised against a peptide corresponding to 20 amino acids near the carboxy terminus of SARS-CoV-2 (COVID-19) Spike glycoprotein. The immunogen is located within the last 50 amino acids of SARS-CoV-2 (COVID-19) Spike protein.

 Immunohistochemistry
Validation of SARS-...

Target

S

Preservatives

SARS-CoV-2 (COVID-19) Spike Antibody is supplied in PBS containing 0.02% sodium azide.

Form/Appearance

Liquid

Concentration

1 mg/mL

Storage

SARS-CoV-2 (COVID-19) Spike S2 antibody can be stored at 4°C for three months and -20°C, stable for up to one year. As with all antibodies care should be taken to avoid repeated freeze thaw cycles. Antibodies should not be exposed to prolonged high temperatures.

Note

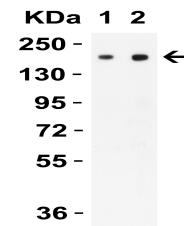
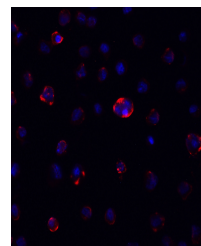
For research use only

Application notes

WB: 1 µg/mL; IF: 20 µg/mL. IHC: 0.5 µg/mL
Antibody validated:
Immunofluorescence and Western blot in human samples. Immunohistochemistry in COVID-19 patient samples. SARS-CoV-2 (COVID-19) Spike S2 antibody can be used for the detection of SARS-CoV-2 (COVID-19) Spike full length protein in ELISA. It will detect 4 ng of free peptide at 1 µg/mL. orb1238686 cannot be used for detection of SARS-CoV-2/SARS-CoV Spike S1, Spike ECD, Spike S2 ECD proteins.) All other applications and species not yet tested.

Isotype

IgG1


 Overexpression
Validation in Spike
Trans...

 Immunofluorescence
Validation of SARS-
Co...