

---

## Product Datasheet

### TRIM25 Antibody (orb1238684)

**Description**

TRIM25 Antibody

**Species/Host**

Rabbit

**Reactivity**

Human, Mouse

**Conjugation**

Unconjugated

**Tested Applications**

ELISA, ICC, IF, WB

**Immunogen**

TRIM25 antibody was raised against a 19 amino acid synthetic peptide from near the carboxy terminus of human TRIM25. The immunogen is located within amino acids 520 - 570 of TRIM25.

**Target**

TRIM25

**Preservatives**

TRIM25 Antibody is supplied in PBS containing 0.02% sodium azide.

**Form/Appearance**

Liquid

**Concentration**

1 mg/mL

**Storage**

TRIM25 antibody can be stored at 4°C for three months and -20°C, stable for up to one year. As with all antibodies care should be taken to avoid repeated freeze thaw cycles. Antibodies should not be exposed to prolonged high temperatures.

**Note**

For research use only

**Application notes**

TRIM25 antibody can be used for detection of TRIM25 by Western blot at 1 µg/mL. Antibody can also be used for immunocytochemistry starting at 20 µg/mL. For immunofluorescence start at 20 µg/mL. Antibody validated: Western Blot in human samples; Immunocytochemistry in human samples and Immunofluorescence in human samples. All other applications and species not yet tested.

**Isotype**

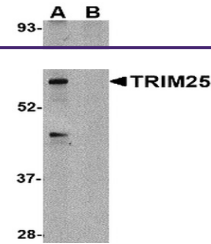
IgG

**Clonality**

Polyclonal

**Uniprot ID**
[Q14258](#)
**NCBI**
[NP\\_005073](#)
**Dilution Range**

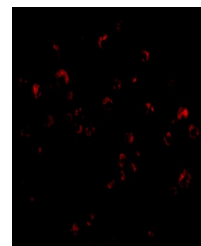
TRIM25 antibody can be used for detection of TRIM25 by Western blot at 1 µg/mL. Antibody can also be used for immunocytochemistry starting at 20 µg/mL. For immunofluorescence start at 20 µg/mL. Antibody validated: Western Blot in human samples; Immunocytochemistry in human samples and



Western blot analysis of TRIM25 in HeLa ...



Immunocytochemistry of TRIM25 in HeLa ce...



Immunofluorescence of TRIM25 in HeLa cel...