

Product Datasheet

TRIM25 Antibody (orb1238683)

Description

TRIM25 Antibody

Species/Host

Rabbit

Reactivity

Human

Conjugation

Unconjugated

Tested

ELISA, ICC, IF, WB

Applications
Immunogen

TRIM25 antibody was raised against a 15 amino acid synthetic peptide from near the amino terminus of human TRIM25. The immunogen is located within amino acids 40 - 90 of TRIM25.

Target

TRIM25

Preservatives

TRIM25 Antibody is supplied in PBS containing 0.02% sodium azide.

Form/Appearance

Liquid

Concentration

1 mg/mL

Storage

TRIM25 antibody can be stored at 4°C for three months and -20°C, stable for up to one year. As with all antibodies care should be taken to avoid repeated freeze thaw cycles. Antibodies should not be exposed to prolonged high temperatures.

Note

For research use only

Application notes

TRIM25 antibody can be used for detection of TRIM25 by Western blot at 1 µg/mL. Antibody can also be used for immunocytochemistry starting at 5 µg/mL. For immunofluorescence start at 20 µg/mL. Antibody validated: Western Blot in human samples; Immunocytochemistry in human samples and Immunofluorescence in human samples. All other applications and species not yet tested.

Isotype

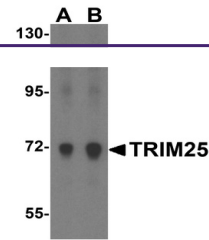
IgG

Clonality

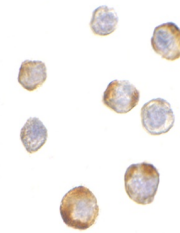
Polyclonal

Uniprot ID
[Q14258](#)
NCBI
[NP_005073](#)
Dilution Range

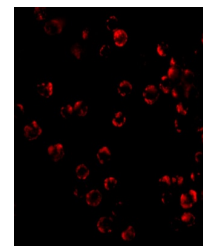
TRIM25 antibody can be used for detection of TRIM25 by Western blot at 1 µg/mL. Antibody can also be used for immunocytochemistry starting at 5 µg/mL. For immunofluorescence start at 20 µg/mL. Antibody validated: Western Blot in human samples; Immunocytochemistry in human samples and



Western blot analysis of TRIM25 in HeLa ...



Immunocytochemistry of TRIM25 in HeLa ce...



Immunofluorescence of TRIM25 in HeLa cel...