

---

## Product Datasheet

### Trim30 Antibody (orb1238682)

**Description**

Trim30 Antibody

**Species/Host**

Rabbit

**Reactivity**

Mouse

**Conjugation**

Unconjugated

**Tested**

ELISA, IF, IHC-P, WB

**Applications**
**Immunogen**

TRIM30 antibody was raised against a 16 amino acid synthetic peptide near the carboxy terminus of the mouse TRIM30. The immunogen is located within amino acids 250 - 300 of TRIM30.

**Target**

Trim30

**Preservatives**

TRIM30 Antibody is supplied in PBS containing 0.02% sodium azide.

**Form/Appearance**

Liquid

**Concentration**

1 mg/mL

**Storage**

TRIM30 antibody can be stored at 4°C for three months and -20°C, stable for up to one year. As with all antibodies care should be taken to avoid repeated freeze thaw cycles. Antibodies should not be exposed to prolonged high temperatures.

**Note**

For research use only

**Application notes**

TRIM30 antibody can be used for detection of TRIM30 by Western blot at 1 µg/mL. Antibody can also be used for immunohistochemistry starting at 10 µg/mL. For immunofluorescence start at 20 µg/mL. Antibody validated: Western Blot in mouse samples; Immunohistochemistry in mouse samples and Immunofluorescence in human samples. All other applications and species not yet tested.

**Isotype**

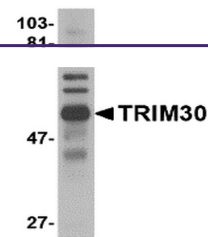
IgG

**Clonality**

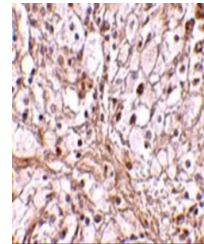
Polyclonal

**Uniprot ID**
[P15533](#)
**NCBI**
[NP\\_033125](#)
**Dilution Range**

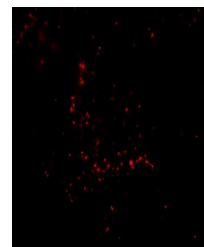
TRIM30 antibody can be used for detection of TRIM30 by Western blot at 1 µg/mL. Antibody can also be used for immunohistochemistry starting at 10 µg/mL. For immunofluorescence start at 20 µg/mL. Antibody validated: Western Blot in mouse samples; Immunohistochemistry in mouse samples



Western blot analysis of TRIM30 in mouse...



Immunohistochemistry of TRIM30 in mouse ...



Immunofluorescence of TRIM30 in Human Ov...