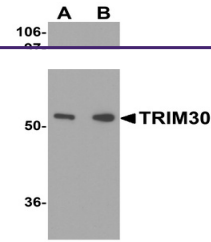
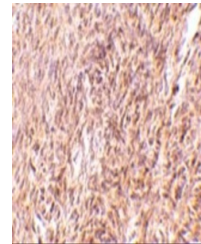

Product Datasheet

Trim30 Antibody (orb1238681)

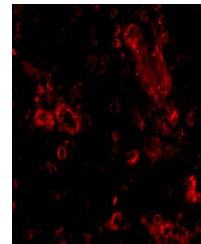
Description	Trim30 Antibody
Species/Host	Rabbit
Reactivity	Mouse, Rat
Conjugation	Unconjugated
Tested Applications	ELISA, IF, IHC-P, WB
Immunogen	TRIM30 antibody was raised against a 21 amino acid synthetic peptide near the amino terminus of the mouse TRIM30. The immunogen is located within amino acids 110 - 160 of TRIM30.
Target	Trim30
Preservatives	TRIM30 Antibody is supplied in PBS containing 0.02% sodium azide.
Form/Appearance	Liquid
Concentration	1 mg/mL
Storage	TRIM30 antibody can be stored at 4°C for three months and -20°C, stable for up to one year. As with all antibodies care should be taken to avoid repeated freeze thaw cycles. Antibodies should not be exposed to prolonged high temperatures.
Note	For research use only
Application notes	TRIM30 antibody can be used for detection of TRIM30 by Western blot at 1 - 2 µg/mL. Antibody can also be used for immunohistochemistry starting at 10 µg/mL. For immunofluorescence start at 20 µg/mL. Antibody validated: Western Blot in mouse samples; Immunohistochemistry in mouse samples and Immunofluorescence in human samples. All other applications and species not yet tested.
Isotype	IgG
Clonality	Polyclonal
MW	Predicted: 107 kDa Observed: 105 kDa
Uniprot ID	P15533
NCBI	NP_033125
Dilution Range	TRIM30 antibody can be used for detection of TRIM30 by Western blot at 1 - 2 µg/mL. Antibody can also be used for immunohistochemistry starting at 10 µg/mL. For immunofluorescence start at 20 µg/mL. Antibody validated: Western Blot in mouse



Western blot analysis of TRIM30 in mouse...



Immunohistochemistry of TRIM30 in mouse ...



Immunofluorescence of TRIM30 in Human Ov...