

---

## Product Datasheet

### TRIM5 Antibody (orb1238679)

**Description**

TRIM5 Antibody

**Species/Host**

Rabbit

**Reactivity**

Human

**Conjugation**

Unconjugated

**Tested Applications**

ELISA, IF, WB

**Immunogen**

TRIM5 alpha antibody was raised against a synthetic peptide corresponding to amino acids near the C-terminus of rhesus monkey TRIM5 alpha. The immunogen is located within the last 50 amino acids of TRIM5 alpha.

**Target**

TRIM5

**Preservatives**

TRIM5 alpha Antibody is supplied in PBS containing 0.02% sodium azide.

**Form/Appearance**

Liquid

**Concentration**

1 mg/mL

**Storage**

TRIM5 alpha antibody can be stored at 4°C for three months and -20°C, stable for up to one year. As with all antibodies care should be taken to avoid repeated freeze thaw cycles. Antibodies should not be exposed to prolonged high temperatures.

**Note**

For research use only

**Application notes**

TRIM5 alpha antibody can be used for detection of TRIM5 alpha by Western blot at 2 µg/mL. Antibody can also be used for immunofluorescence starting at 10 µg/mL. For immunofluorescence start at 10 µg/mL. Antibody validated: Western Blot in human samples and Immunofluorescence in human samples. All other applications and species not yet tested.

**Isotype**

IgG

**Clonality**

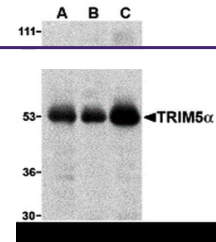
Polyclonal

**MW**

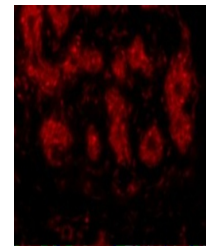
Predicted: 54 kDa Observed: 55 kDa

**Uniprot ID**
[Q0PF16](#)
**NCBI**
[ABG67967](#)
**Dilution Range**

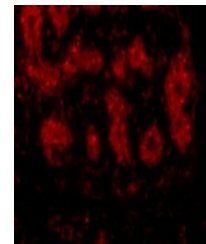
TRIM5 alpha antibody can be used for detection of TRIM5 alpha by Western blot at 2 µg/mL. Antibody can also be used for immunofluorescence starting at 10 µg/mL. For immunofluorescence start at 10 µg/mL. Antibody validated: Western Blot in human



Western blot analysis of TRIM5 alpha exp...



Immunofluorescence of TRIM5 alpha in hum...



Immunofluorescence of TRIM5 alpha in Hum...