
Product Datasheet

TRIM5 Antibody (orb1238678)

Description

TRIM5 Antibody

Species/Host

Rabbit

Reactivity

Human

Conjugation

Unconjugated

Tested Applications

ELISA, IF, IHC-P, WB

Immunogen

TRIM5 alpha antibody was raised against a synthetic peptide corresponding to amino acids near the mid-region of human TRIM5 alpha. The immunogen is located within amino acids 370 - 420 of TRIM5 alpha.

Target

TRIM5

Preservatives

TRIM5 alpha Antibody is supplied in PBS containing 0.02% sodium azide.

Form/Appearance

Liquid

Concentration

1 mg/mL

Storage

TRIM5 alpha antibody can be stored at 4°C for three months and -20°C, stable for up to one year. As with all antibodies care should be taken to avoid repeated freeze thaw cycles. Antibodies should not be exposed to prolonged high temperatures.

Note

For research use only

Application notes

TRIM5 alpha antibody can be used for detection of TRIM5 alpha by Western blot at 2 µg/mL. A band at approximately 55 kDa can be detected. Antibody can also be used for immunohistochemistry starting at 2 µg/mL. For immunofluorescence start at 10 µg/mL. Antibody validated: Western Blot in human samples; Immunohistochemistry in human samples and Immunofluorescence in human samples. All other applications and species not yet tested.

Isotype

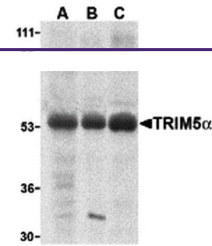
IgG

Clonality

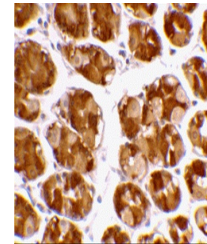
Polyclonal

Uniprot ID
[Q9C035](#)
NCBI
[NP_149023](#)
Dilution Range

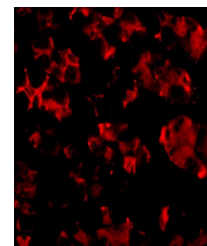
TRIM5 alpha antibody can be used for detection of TRIM5 alpha by Western blot at 2 µg/mL. A band at approximately 55 kDa can be detected. Antibody can also be used for immunohistochemistry starting at 2 µg/mL. For immunofluorescence start at 10



Western blot analysis of TRIM5 alpha exp...



Immunohistochemical staining of human st...



Immunofluorescence of TRIM5 alpha in Hum...