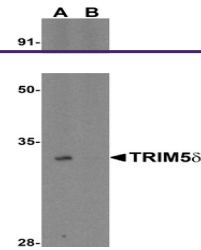
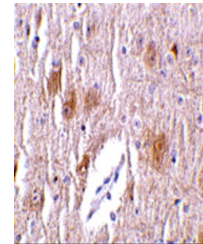

Product Datasheet

TRIM5 Antibody (orb1238676)

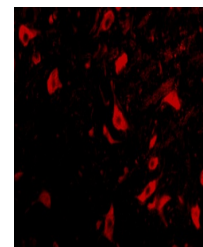
Description	TRIM5 Antibody
Species/Host	Rabbit
Reactivity	Human
Conjugation	Unconjugated
Tested Applications	ELISA, IF, IHC-P, WB
Immunogen	TRIM5 delta antibody was raised against a synthetic peptide corresponding to 13 amino acids near the carboxy terminus of human TRIM5 delta. The immunogen is located within the last 50 amino acids of TRIM5 delta.
Target	TRIM5
Preservatives	TRIM5 delta Antibody is supplied in PBS containing 0.02% sodium azide.
Form/Appearance	Liquid
Concentration	1 mg/mL
Storage	TRIM5 delta antibody can be stored at 4°C for three months and -20°C, stable for up to one year. As with all antibodies care should be taken to avoid repeated freeze thaw cycles. Antibodies should not be exposed to prolonged high temperatures.
Note	For research use only
Application notes	TRIM5 delta antibody can be used for detection of TRIM5 delta by Western blot at 2 µg/mL. A band at approximately 25 kDa can be detected. Antibody can also be used for immunohistochemistry starting at 1 µg/mL. For immunofluorescence start at 10 µg/mL. Antibody validated: Western Blot in human samples; Immunohistochemistry in mouse samples and Immunofluorescence in mouse samples. All other applications and species not yet tested.
Isotype	IgG
Clonality	Polyclonal
MW	Predicted: 36 kDa Observed: 33 kDa
Uniprot ID	Q9C035
NCBI	NP_149084
Dilution Range	TRIM5 delta antibody can be used for detection of TRIM5 delta by Western blot at 2 µg/mL. A band at approximately 25 kDa can be detected. Antibody can



Western blot analysis of TRIM5 delta in ...



Immunohistochemistry of TRIM5 delta in m...



Immunofluorescence of TRIM5 delta in mou...