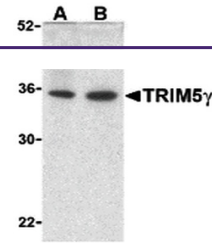
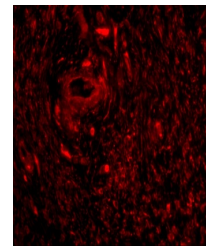

Product Datasheet

TRIM5 Antibody (orb1238675)

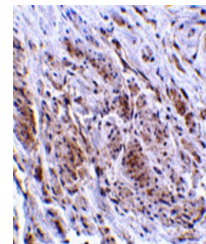
Description	TRIM5 Antibody
Species/Host	Rabbit
Reactivity	Human
Conjugation	Unconjugated
Tested Applications	ELISA, IF, IHC-P, WB
Immunogen	TRIM5 gamma antibody was raised against a synthetic peptide corresponding to 15 amino acids near the carboxy terminus of human TRIM5 gamma. The immunogen is located within the last 50 amino acids of TRIM5 gamma.
Target	TRIM5
Preservatives	TRIM5 gamma Antibody is supplied in PBS containing 0.02% sodium azide.
Form/Appearance	Liquid
Concentration	1 mg/mL
Storage	TRIM5 gamma antibody can be stored at 4°C for three months and -20°C, stable for up to one year. As with all antibodies care should be taken to avoid repeated freeze thaw cycles. Antibodies should not be exposed to prolonged high temperatures.
Note	For research use only
Application notes	TRIM5 gamma antibody can be used for detection of TRIM5 gamma by Western blot at 2 µg/mL. A band at approximately 35 kDa can be detected. Antibody can also be used for immunohistochemistry starting at 2 µg/mL. For immunofluorescence start at 20 µg/mL. Antibody validated: Western Blot in human samples; Immunohistochemistry in human samples and Immunofluorescence in human samples. All other applications and species not yet tested.
Isotype	IgG
Clonality	Polyclonal
Uniprot ID	Q9C035
NCBI	NP_149083
Dilution Range	TRIM5 gamma antibody can be used for detection of TRIM5 gamma by Western blot at 2 µg/mL. A band at approximately 35 kDa can be detected. Antibody can also be used for immunohistochemistry starting at 2



Western blot analysis of TRIM5 gamma exp...



Immunofluorescence of TRIM5 gamma in hum...



Immunohistochemistry of TRIM5 gamma in h...