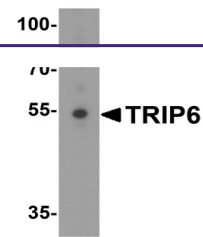


---

## Product Datasheet

### TRIP6 Antibody (orb1238672)

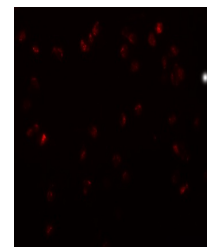
<b>Description</b>	TRIP6 Antibody
<b>Species/Host</b>	Rabbit
<b>Reactivity</b>	Human, Mouse
<b>Conjugation</b>	Unconjugated
<b>Tested Applications</b>	ELISA, ICC, IF, WB
<b>Immunogen</b>	TRIP6 antibody was raised against a 15 amino acid synthetic peptide near the center of human TRIP6. The immunogen is located within amino acids 190 - 240 of TRIP6.
<b>Target</b>	TRIP6
<b>Preservatives</b>	TRIP6 Antibody is supplied in PBS containing 0.02% sodium azide.
<b>Form/Appearance</b>	Liquid
<b>Concentration</b>	1 mg/mL
<b>Storage</b>	TRIP6 antibody can be stored at 4°C for three months and -20°C, stable for up to one year. As with all antibodies care should be taken to avoid repeated freeze thaw cycles. Antibodies should not be exposed to prolonged high temperatures.
<b>Note</b>	For research use only
<b>Application notes</b>	TRIP6 antibody can be used for detection of TRIP6 by Western blot at 1 µg/mL. Antibody can also be used for immunocytochemistry starting at 10 µg/mL. For immunofluorescence start at 20 µg/mL. Antibody validated: Western Blot in human samples; Immunocytochemistry in human samples and Immunofluorescence in human samples. All other applications and species not yet tested.
<b>Isotype</b>	IgG
<b>Clonality</b>	Polyclonal
<b>Uniprot ID</b>	<a href="#">Q15654</a>
<b>NCBI</b>	<a href="#">NP_003293</a>
<b>Dilution Range</b>	TRIP6 antibody can be used for detection of TRIP6 by Western blot at 1 µg/mL. Antibody can also be used for immunocytochemistry starting at 10 µg/mL. For immunofluorescence start at 20 µg/mL. Antibody validated: Western Blot in human samples; Immunocytochemistry in human samples and



Western blot analysis of TRIP6 in A431 c...



Immunocytochemistry of TRIP6 in HeLa cel...



Immunofluorescence of TRIP6 in HeLa cell...