
Product Datasheet

SIGLEC15 Antibody (orb1238667)

Description

SIGLEC15 Antibody

Species/Host

Rabbit

Reactivity

Human, Mouse, Rat

Conjugation

Unconjugated

Tested Applications

ELISA, WB

Immunogen

Anti-SIGLEC15 antibody (orb1238667) was raised against a peptide corresponding to 14 amino acids near the carboxy terminus of human SIGLEC15. The immunogen is located within amino acids 270-320 of SIGLEC15.

Target

SIGLEC15

Preservatives

SIGLEC15 Antibody is supplied in PBS containing 0.02% sodium azide.

Form/Appearance

Liquid

Concentration

1 mg/mL

Storage

SIGLEC15 antibody can be stored at 4°C for three months and -20°C, stable for up to one year. As with all antibodies care should be taken to avoid repeated freeze thaw cycles. Antibodies should not be exposed to prolonged high temperatures.

Note

For research use only

Isotype

IgG

Clonality

Polyclonal

MW

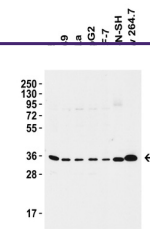
Predicted: 36kD Observed: 34-36kD

Uniprot ID
[Q6ZMC9](#)
NCBI
[NP_998767](#)
Dilution Range

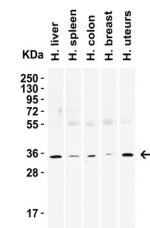
WB: 2 µg/mL. Antibody validated: Western Blot in human, mouse and rat samples. All other applications and species not yet tested.

Expiration Date

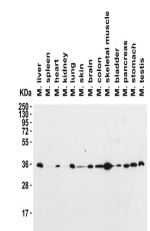
12 months from date of receipt.



Western Blot Validation in Human and Mou...



Western Blot Validation in Human Tissues...



Western Blot Validation in Mouse Tissues...