

---

## Product Datasheet

### SLC22A17 Antibody (orb1238666)

**Description**

SLC22A17 Antibody

**Species/Host**

Rabbit

**Reactivity**

Human, Mouse, Rat

**Conjugation**

Unconjugated

**Tested Applications**

ELISA, IF, IHC-P, WB

**Immunogen**

Slc22A17 antibody was raised against a 14 amino acid synthetic peptide near the carboxy terminus of the human Slc22A17. The immunogen is located within the last 50 amino acids of Slc22A17.

**Target**

SLC22A17

**Preservatives**

Slc22A17 Antibody is supplied in PBS containing 0.02% sodium azide.

**Form/Appearance**

Liquid

**Concentration**

1 mg/mL

**Storage**

Slc22A17 antibody can be stored at 4°C for three months and -20°C, stable for up to one year. As with all antibodies care should be taken to avoid repeated freeze thaw cycles. Antibodies should not be exposed to prolonged high temperatures.

**Note**

For research use only

**Application notes**

Slc22A17 antibody can be used for detection of Slc22A17 by Western blot at 0.5 µg/mL. Antibody can also be used for immunofluorescence starting at 20 µg/mL. Antibody can also be used for immunohistochemistry starting at 2.5 µg/mL. Antibody validated: Western Blot in human samples; Immunohistochemistry in mouse samples and Immunofluorescence in mouse and rat samples. All other applications and species not yet tested.

**Isotype**

IgG

**Clonality**

Polyclonal

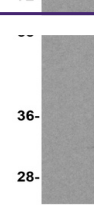
**MW**

Predicted: 59 kDa Observed: 61 kDa

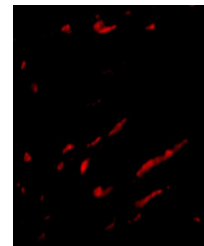
**Uniprot ID**
[Q8WUG5](#)
**NCBI**
[Q8WUG5](#)
**Dilution Range**

Slc22A17 antibody can be used for detection of Slc22A17 by Western blot at 0.5 µg/mL. Antibody can also be used for immunofluorescence starting at 20 µg/mL. Antibody can also be used for

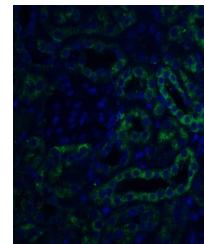
A B



Western blot analysis of SLC22A17 in SK-NSH cells



Immunofluorescence of SLC22A17 in rat kidney



Immunofluorescence of SLC22A17 in mouse