

---

## Product Datasheet

### SNAI2 Antibody (orb1238665)

**Description**

SNAI2 Antibody

**Species/Host**

Rabbit

**Reactivity**

Human, Mouse

**Conjugation**

Unconjugated

**Tested Applications**

ELISA, IF, WB

**Immunogen**

Slug antibody was raised against a 13 amino acid synthetic peptide from near the center of human Slug. The immunogen is located within amino acids 90 - 140 of Slug.

**Target**

SNAI2

**Preservatives**

Slug Antibody is supplied in PBS containing 0.02% sodium azide.

**Form/Appearance**

Liquid

**Concentration**

1 mg/mL

**Storage**

Slug antibody can be stored at 4°C for three months and -20°C, stable for up to one year. As with all antibodies care should be taken to avoid repeated freeze thaw cycles. Antibodies should not be exposed to prolonged high temperatures.

**Note**

For research use only

**Application notes**

Slug antibody can be used for detection of Slug by Western blot at 0.5 µg/mL. Antibody can also be used for immunofluorescence starting at 20 µg/mL. Antibody validated: Western Blot in human and mouse samples and Immunofluorescence in human samples. All other applications and species not yet tested.

**Isotype**

IgG

**Clonality**

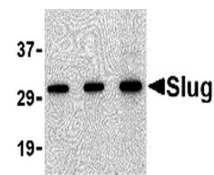
Polyclonal

**MW**

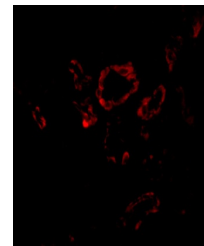
Predicted: 29 kDa Observed: 30 kDa

**Uniprot ID**
[O43623](#)
**NCBI**
[O43623](#)
**Dilution Range**

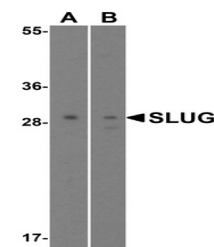
Slug antibody can be used for detection of Slug by Western blot at 0.5 µg/mL. Antibody can also be used for immunofluorescence starting at 20 µg/mL. Antibody validated: Western Blot in human and mouse samples and Immunofluorescence in human samples. All other applications and species not yet tested.

**A B C**


Western blot analysis of Slug in 293 cel...



Immunofluorescence of Slug in human kidn...



Western blot analysis of SLUG expression...