
Product Datasheet

TSC1 Antibody (orb1238664)

Description

TSC1 Antibody

Species/Host

Rabbit

Reactivity

Human, Mouse, Rat

Conjugation

Unconjugated

Tested Applications

ELISA, ICC, IF, WB

Immunogen

TSC1 antibody was raised against a 15 amino acid synthetic peptide from the middle region of human TSC1. The immunogen is located within amino acids 220 - 270 of TSC1.

Target

TSC1

Preservatives

TSC1 Antibody is supplied in PBS containing 0.02% sodium azide.

Form/Appearance

Liquid

Concentration

1 mg/mL

Storage

TSC1 antibody can be stored at 4°C for three months and -20°C, stable for up to one year. As with all antibodies care should be taken to avoid repeated freeze thaw cycles. Antibodies should not be exposed to prolonged high temperatures.

Note

For research use only

Application notes

TSC1 antibody can be used for the detection of TSC1 by Western blot at 1 µg/mL. Antibody can also be used for immunocytochemistry starting at 2 µg/mL. For immunofluorescence start at 2 µg/mL. Antibody validated: Western Blot in mouse samples; Immunocytochemistry in mouse samples and Immunofluorescence in mouse samples. All other applications and species not yet tested.

Isotype

IgG

Clonality

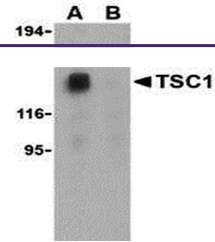
Polyclonal

MW

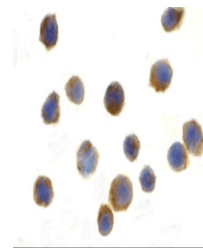
Predicted: 128 kDa Observed: 135 kDa

Uniprot ID
[Q92574](#)
NCBI
[AAC51674](#)
Dilution Range

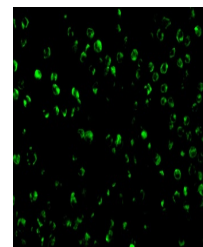
TSC1 antibody can be used for the detection of TSC1 by Western blot at 1 µg/mL. Antibody can also be used for immunocytochemistry starting at 2 µg/mL. For immunofluorescence start at 2 µg/mL. Antibody validated: Western Blot in mouse samples;



Western blot analysis of TSC1 in EL4 cells...



Immunocytochemistry of TSC1 in EL4 cells...



Immunofluorescence of TSC1 in L1210 cells...