

---

## Product Datasheet

### TSC22D3 Antibody (orb1238663)

**Description**

TSC22D3 Antibody

**Species/Host**

Rabbit

**Reactivity**

Human, Mouse

**Conjugation**

Unconjugated

**Tested Applications**

ELISA, IF, IHC-P, WB

**Immunogen**

Rabbit polyclonal TSC22D3 antibody was raised against a 16 amino acid peptide near the amino terminus of human TSC22D3. The immunogen is located within amino acids 40 - 90 of TSC22D3.

**Target**

TSC22D3

**Preservatives**

TSC22D3 Antibody is supplied in PBS containing 0.02% sodium azide.

**Form/Appearance**

Liquid

**Concentration**

1 mg/mL

**Storage**

TSC22D3 antibody can be stored at 4°C for three months and -20°C, stable for up to one year.

**Note**

For research use only

**Application notes**

TSC22D3 antibody can be used for detection of TSC22D3 by Western blot at 1 - 2 µg/mL. Antibody validated: Western Blot in human samples; Immunohistochemistry in human samples and Immunofluorescence in human samples. All other applications and species not yet tested.

**Isotype**

IgG

**Clonality**

Polyclonal

**MW**

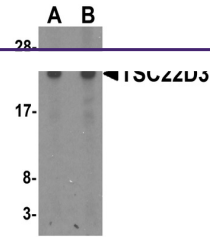
Predicted: 22 kDa Observed: 23 kDa

**Uniprot ID**
[Q99576](https://www.uniprot.org/uniprot/Q99576)
**NCBI**
[NP\\_932174](https://www.ncbi.nlm.nih.gov/nuccore/NP_932174)
**Dilution Range**

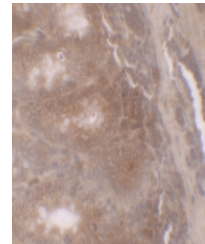
TSC22D3 antibody can be used for detection of TSC22D3 by Western blot at 1 - 2 µg/mL. Antibody validated: Western Blot in human samples; Immunohistochemistry in human samples and Immunofluorescence in human samples. All other applications and species not yet tested.

**Expiration Date**

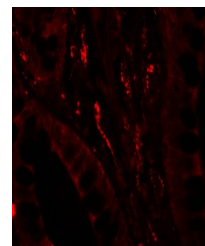
12 months from date of receipt.



Western blot analysis of TSC22D3 in huma...



Immunohistochemistry of TSC22D3 in human...



Immunofluorescence of TSC22D3 in human S...